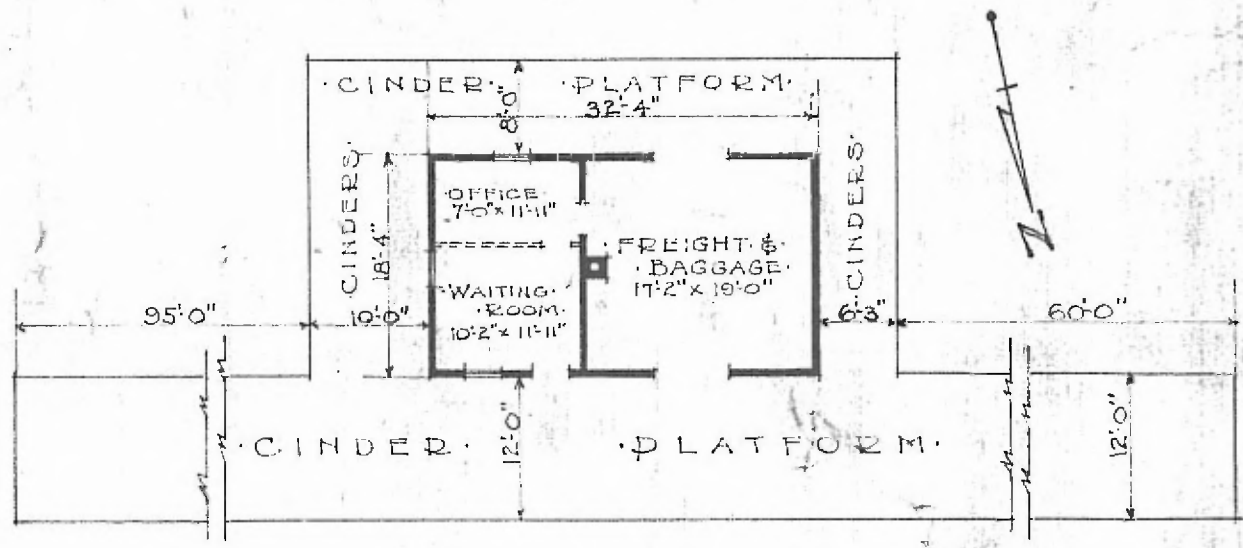


·ERECTED· 1887  
 ·TYPE· FRAME  
 ·FOUNDATION· PILE HEADS  
 ·WALLS· 2" x 6"  
 ·ROOF· { TYPE· GABLE SHINGLES  
 PITCH· 1/3  
 ·HEATING· STOVES

·FLOOR· 3/4 x 3/4 Y.P.  
 ·FINISH· { INSIDE· 3/4 x 3/4" M. & B.  
 OUTSIDE·  
 ·CEILING HEIGHT· 11'-5"  
 ·LIGHTING· OIL LAMPS  
 ·SANITARY FACILITIES· OUTSIDE TOILETS.

DIV. NORTHERN  
 SUB-DIV. BURRTON  
 STA No. F-523



·FLOOR PLAN·  
 SCALE 1/16" = 1'0"

·COMBINATION STATION·  
 ·BENTLEY KANS·

APRIL 27, 1917