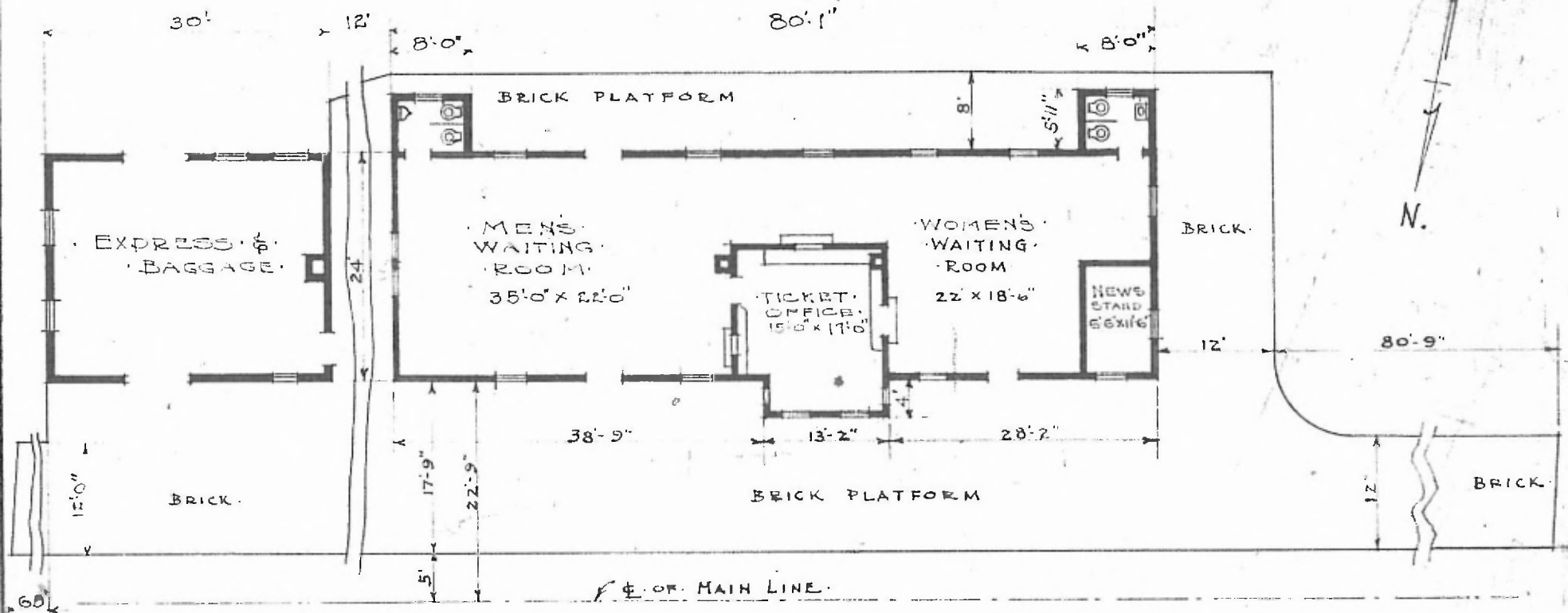


ERECTED 1910
 TYPE BRICK
 FOUNDATION CONCRETE
 WALLS 13"
 ROOF TYPE - HIP-TILE.
 PITCH - 1/2
 HEATING STOVES.

FLOOR 7/8" x 3 1/4"
 FINISH { INSIDE
 OUTSIDE
 CEILING HEIGHT 14'-0"
 LIGHTING GAS.
 SANITARY FACILITIES - INSIDE TOILETS.

DIV. NORTHERN
 SUB. DIV. VICTORIA
 STD. No F-484

89



FLOOR LINE
 SCALE: 1/16" = 1'-0"

PASSENGER STATION AT
 AUGUSTA KAN.

MARCH 20, 1917