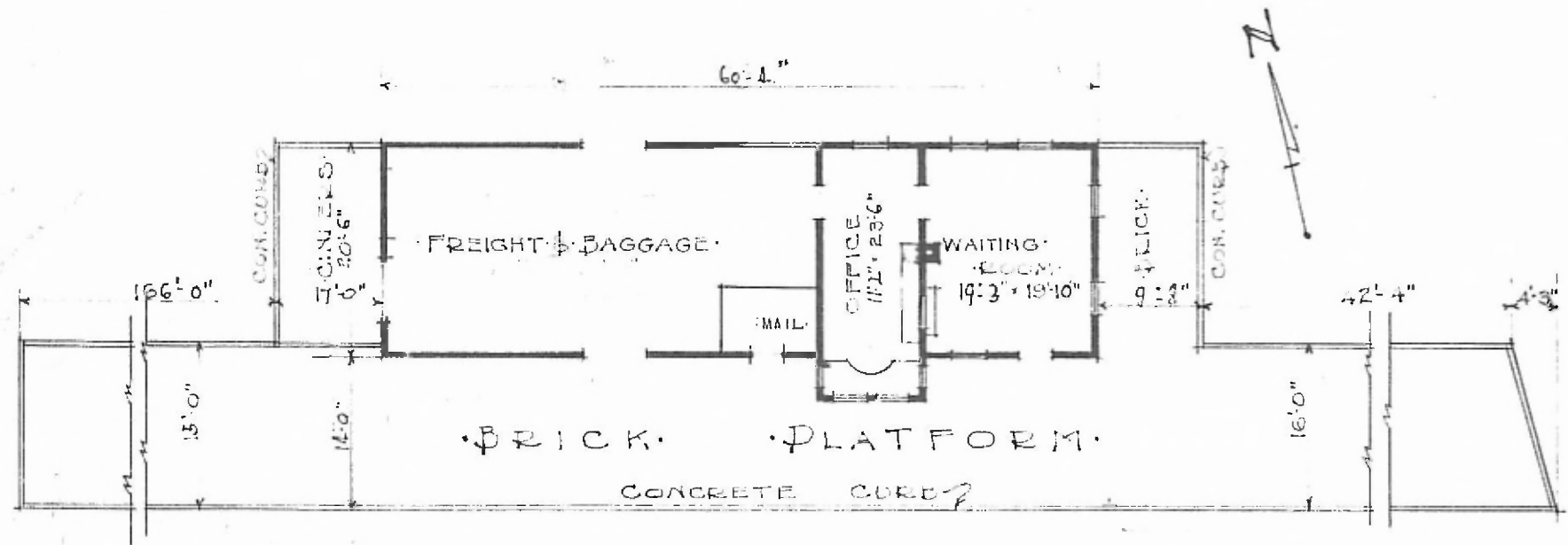


ERECTED 1923
 TYPE FRAME
 ROOF SHINGLES
 WALLS 2"x6"
 FLOOR CONCRETE
 HEATING STOVES

FLOOR FINISH 1"x4" Fir
 CEILING HEIGHT 11'-7"
 LIGHTING OIL LAMPS
 SANITARY FACILITIES OUTSIDE TOILETS

DIV. NORTHERN
 SUB-DIV. CARTHAGE
 STA. NO. F-371



FLOOR PLAN
 SCALE 1/8" = 1'-0"

COMBINATION STATION
 ALTAMONT KANS.

OCTOBER 20 1923

ORIGINAL SURVEY FILED ON ARCHITECT'S CORRESPONDENCE FILE 1-48