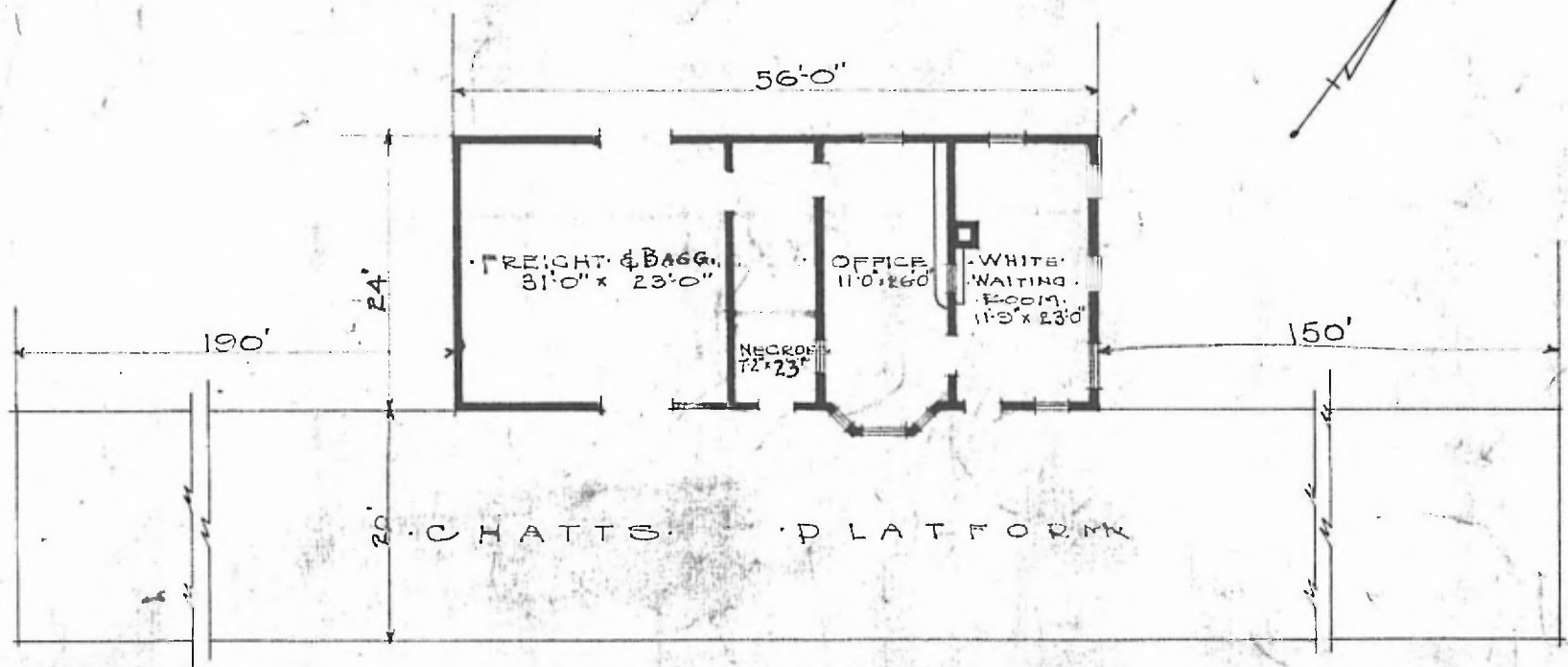


·ERECTED· 1915  
 ·TYPE· FRAME  
 ·FOUNDATION· CONCRETE  
 ·WALLS· 2"x6"  
 ·ROOF· (TYPE· HIP SHINGLES  
 PITCH·  $\frac{1}{3}$   
 HEATING STOVES.

·FLOOR·  $\frac{7}{8}$ " x  $\frac{3}{4}$ " Y.P.  
 ·FINISH (INSIDE·  $\frac{7}{8}$ " x  $\frac{3}{4}$ " M.&B.  
 OUTSIDE·  
 ·CEILING HEIGHT· 11'-3"  
 ·LIGHTING· OIL LAMPS.  
 ·SANITARY FACILITIES· OUTSIDE TOILETS.

DIV. SOUTHERN  
 SUB. MEMPHIS  
 STR. No. C 308

19



·FLOOR PLAN·  
 SCALE  $\frac{1}{16}$ " = 1'0"

·COMBINATION STATION·  
 ·WILLIFORD ARK·

OCT. 10, 1917