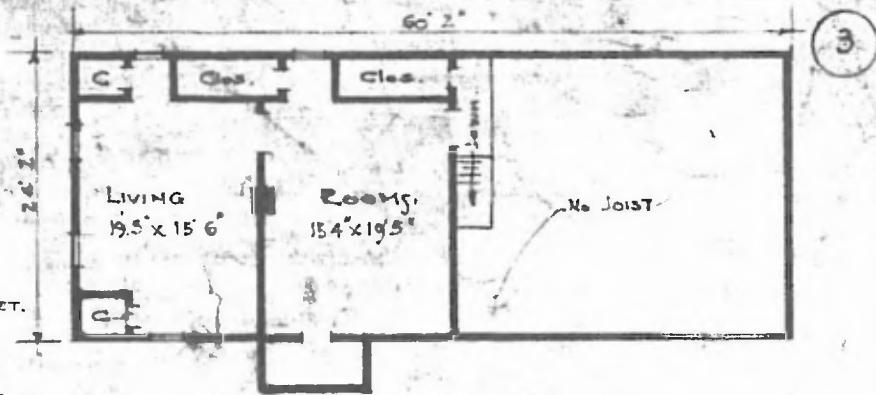
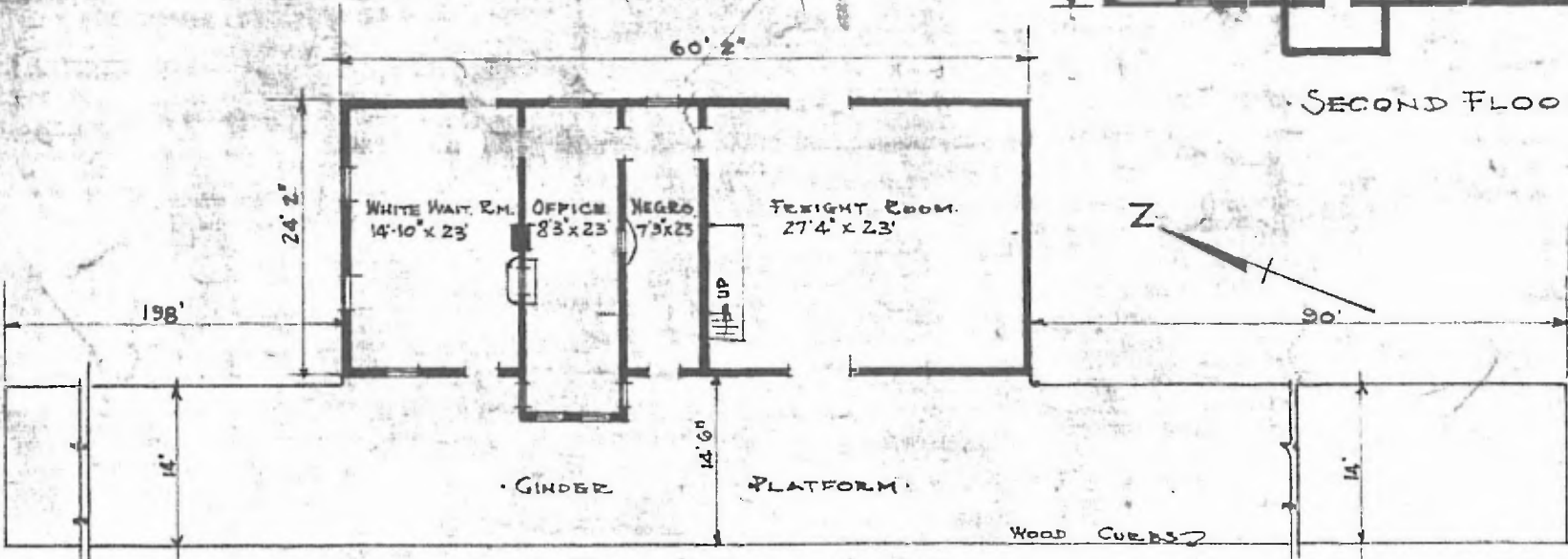


ERECTED. 1884.
 TYPE. FRAME.
 FOUNDATION. PILE HEADS.
 WALLS. 2"x6" - 2"x4"
 ROOF TYPE. GABLE, SHINGLES
 PITCH. 13-
 HEATING. STOVES.

FLOOR. EX. 2 1/4" - Y. PINE. 2" x 2" x 5 1/2" PINE.
 INSIDE. 3/4" x 5 1/2" BR. CEILING.
 FINISH. OUTSIDE. BOARD & BATTEN.
 CEILING HEIGHT. 9'7" FT. ON 15'6"
 2ND 7'6"
 LIGHTING. LAMPS.
 SANITARY FACILITIES. OUTSIDE TOILET.



SECOND FLOOR



FLOOR PLAN
 SCALE 1/16" = 1'0"

DIV. CENTRAL
 STA. No. ~~896~~ 363
 TEL. CALL: WF
 SUB. DIV. FORT SMITH

COMBINATION STATION AT
 WESTFORK, ARK.