

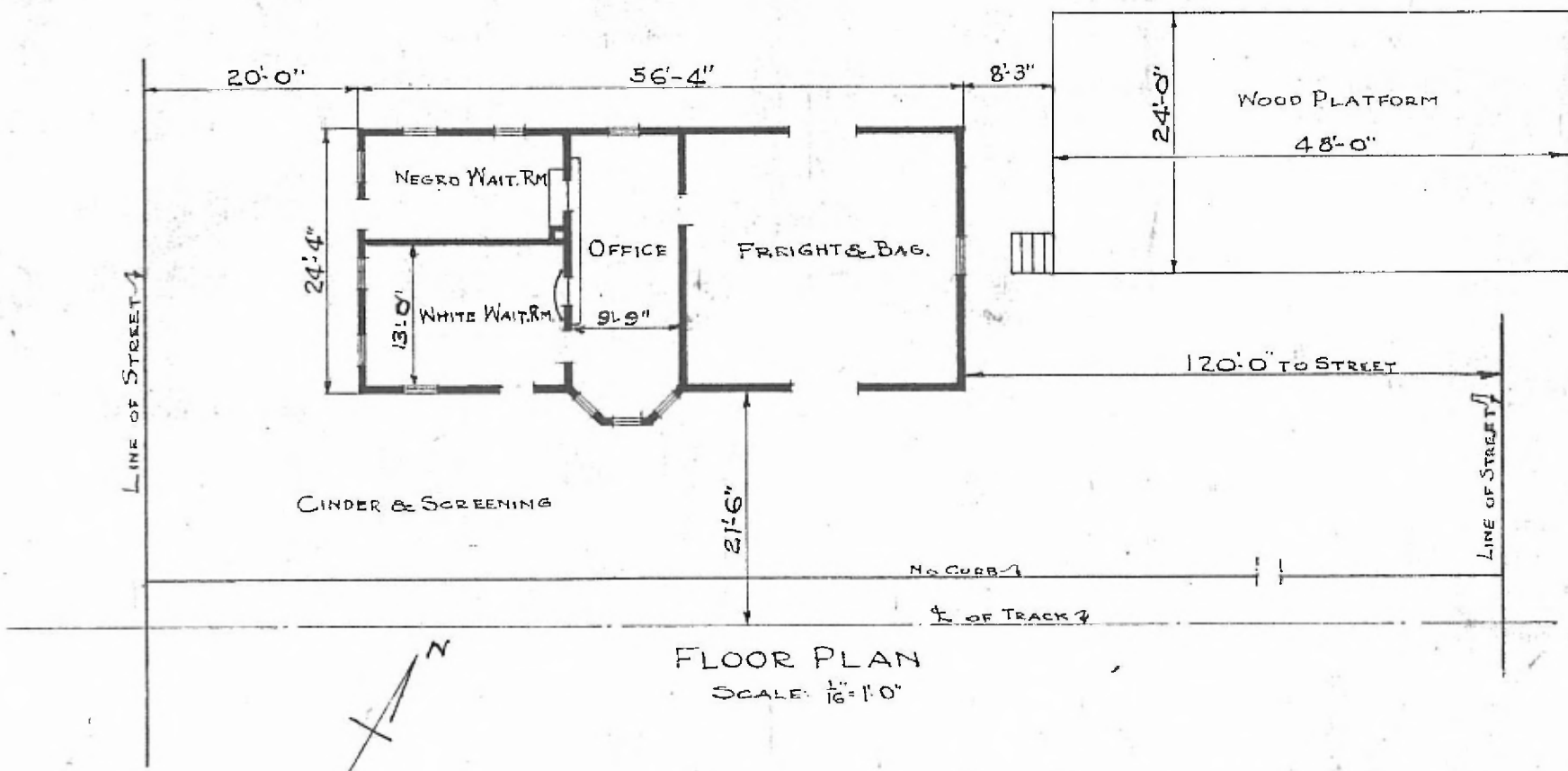
ERECTED 1906  
 TYPE FRAME  
 FOUNDATION BLOCKS  
 WALLS 2x6  
 ROOF { TYPE HIP SHINGLES  
 PITCH  $\frac{1}{3}$   
 HEATING STOVES

FLOOR  $\frac{1}{8}$ " x  $2\frac{1}{4}$ " MAPLE  
 FINISH { INSIDE  
 OUTSIDE  $\frac{1}{8}$ " x  $3\frac{1}{2}$ " M. & B.  
 CEILING HEIGHT 12'-2"  
 LIGHTING ELECTRIC  
 SANITARY FACILITIES OUTSIDE TOILETS

DIV. RIVER  
 SUB. HOXIE  
 STA. No. TR 759

71

House Track



FLOOR PLAN  
 SCALE:  $\frac{1}{16}$ " = 1'-0"

COMBINATION STATION  
 WALNUT RIDGE, ARK.

SEPT. 12, 1918