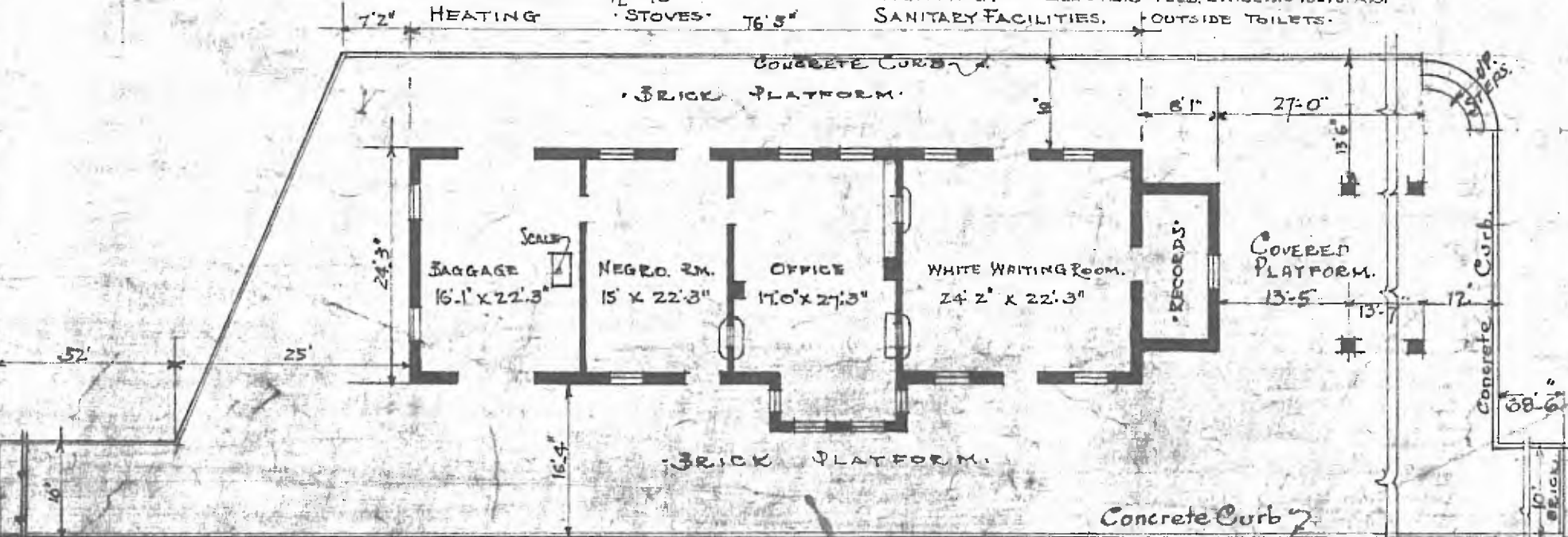


ERECTED. 1902.
 TYPE. BRICK.
 FOUNDATION. BRICK WITH CONCRETE.
 WALLS. 13" FOOTINGS.
 ROOF { TYPE. HIP. TILE.
 PITCH $\frac{1}{2}$ - $\frac{1}{3}$
 HEATING STOVES 76.5"

FLOOR. $\frac{3}{4}$ x $3\frac{1}{4}$ " Y. PINE.
 FINISH { INSIDE. PLASTER SMOOTH.
 OUTSIDE. BRICK WHITE MORTAR.
 CEILING HEIGHT. 14' 0"
 LIGHTING. ELECTRIC FEED. 2 WIRE. 110 VOLTS. A.C.
 SANITARY FACILITIES. OUTSIDE TOILETS.



FLOOR PLAN
 SCALE $\frac{1}{16}$ = 1' 0"

DIV. CENTRAL
 SUB. DIV. FT. SMITH
 STA. NO 410

PASSENGER STATION AT
 VAN BUREN ARK.

JULY 15 1915