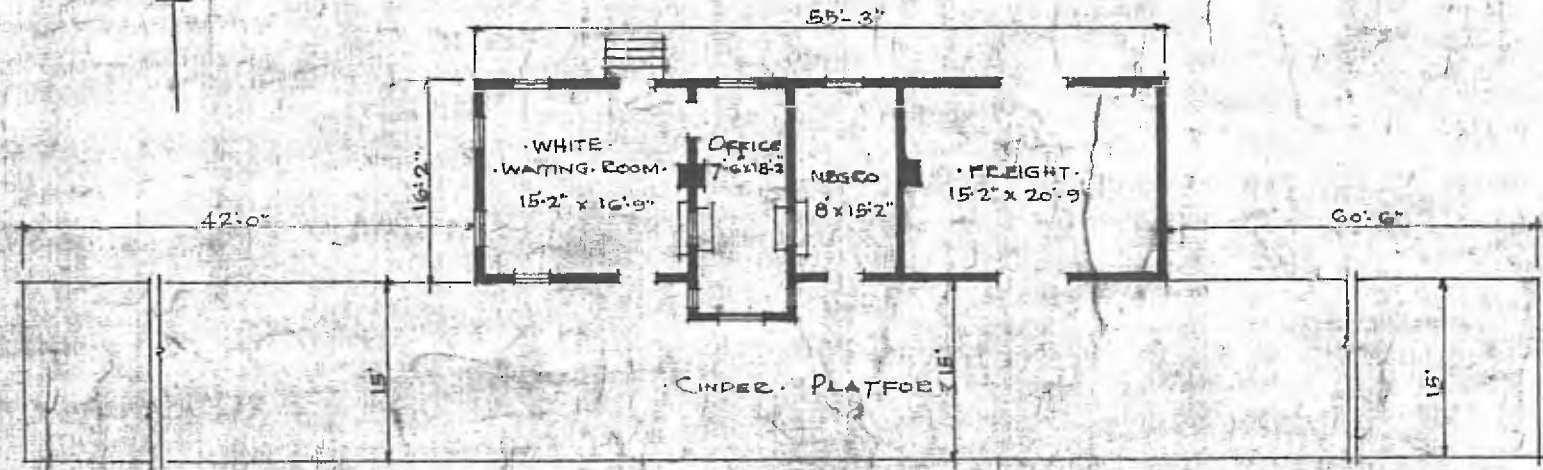


N

ERECTED. 1901.
 TYPE. FRAME.
 FOUNDATION. PILE HEADS.
 WALLS. 2"x4"
 ROOF { TYPE. HIP. SHINGLES.
 PITCH. 1/3
 HEATING. STOVES.

FLOOR 3/4" x 3 1/4" Y. PINE.
 { INSIDE. 1 5/8" x 3 1/2" BD. CEILING.
 FINISH { OUTSIDE. BOARD & BATT.
 CEILING HEIGHT 11'-11"
 LIGHTING LAMPS.
 SANITARY FACILITIES. OUTSIDE TOILETS.



FLOOR PLAN.
 SCALE 1/16" = 1'-0"

DIV. RED RIVER
 SUB. DIV. MUSKOGEE
 STA. No Y 379

COMBINATION STATION AT
 SUMMERS, ARK.