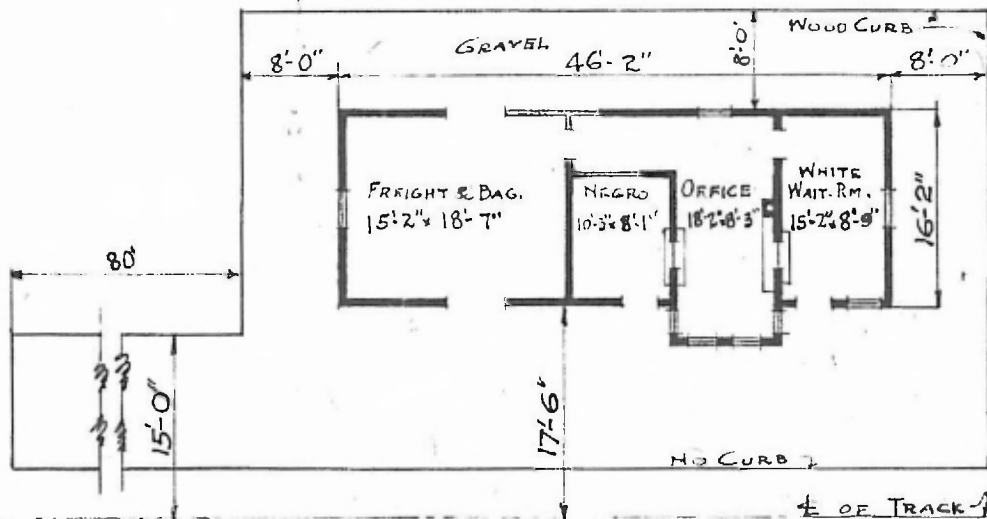


ERECTED 1889  
 TYPE FRAME  
 FOUNDATION PILE HEADS  
 WALLS 2x4  
 ROOF { TYPE GABLE SHINGLES  
 { PITCH  $\frac{1}{3}$   
 HEATING STOVES

FLOOR  $7' \times 3\frac{1}{2}"$   
 FINISH { OUTSIDE BOX-DROP SIDING  
 { INSIDE  $7' \times 3\frac{1}{2}"$  M. & B.  
 CEILING HEIGHT 11' 4"  
 LIGHTING OIL  
 SANITARY FACILITIES OUTSIDE TOILETS

SUB. HOXIE  
 STA. NO. TA-224

(65)



FLOOR PLAN  
 SCALE:  $\frac{1}{16}'' = 1'-0''$

COMBINATION STATION  
 SUCCESS, ARK.