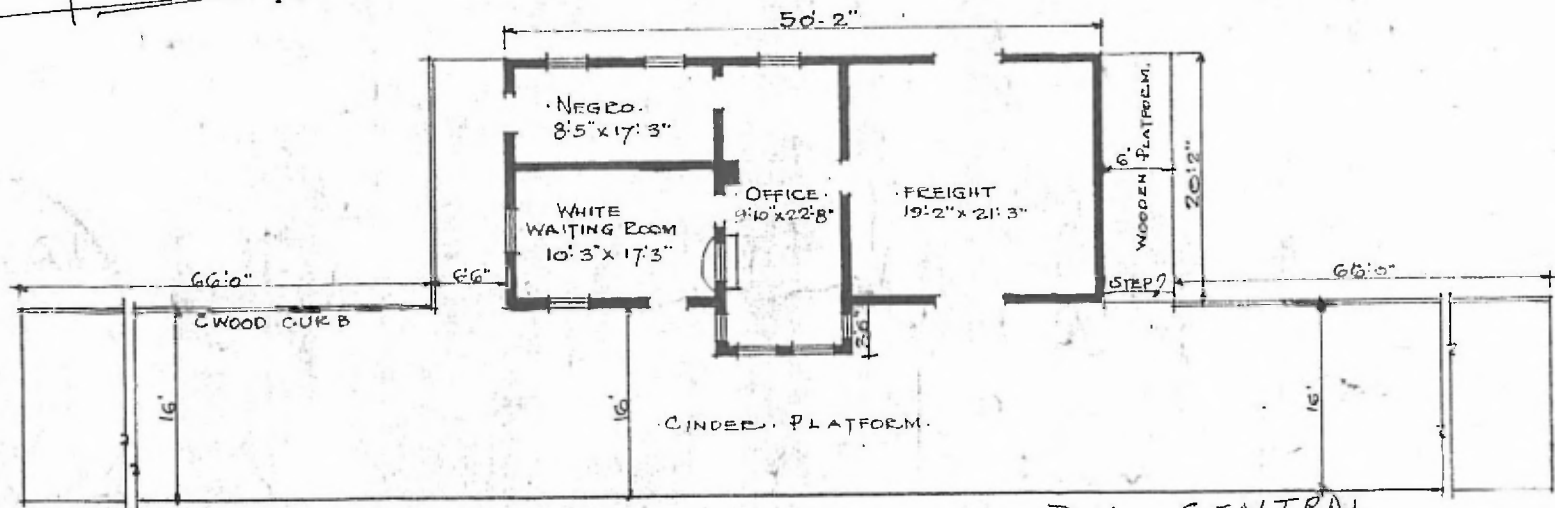


ERECTED. 1900
 TYPE. FRAME.
 FOUNDATION. PILE HEADS
 WALLS. 2"x6"
 ROOF { TYPE GABLE SHINGLES
 DITCH 1/2
 HEATING STOVES.

FLOOR 3/4" x 3/4" Y. PINE.
 FINISH { INSIDE. 3/4" x 3/4" BD CEILING
 OUTSIDE 1"x6" O.G. DROP SIDING
 CEILING HEIGHT 13'-0"
 LIGHTING. LAMPS.
 SANITARY. FACILITIES. OUTSIDE TOILETS.



FLOOR PLAN.
 SCALE 1/8" = 1'-0"

DIV. CENTRAL
 SUB. DIV. FT. SMITH
 STR. NO. A-387
 (ST. PAUL BRANCH)

COMBINATION STATION AT
 ST. PAUL ARK.