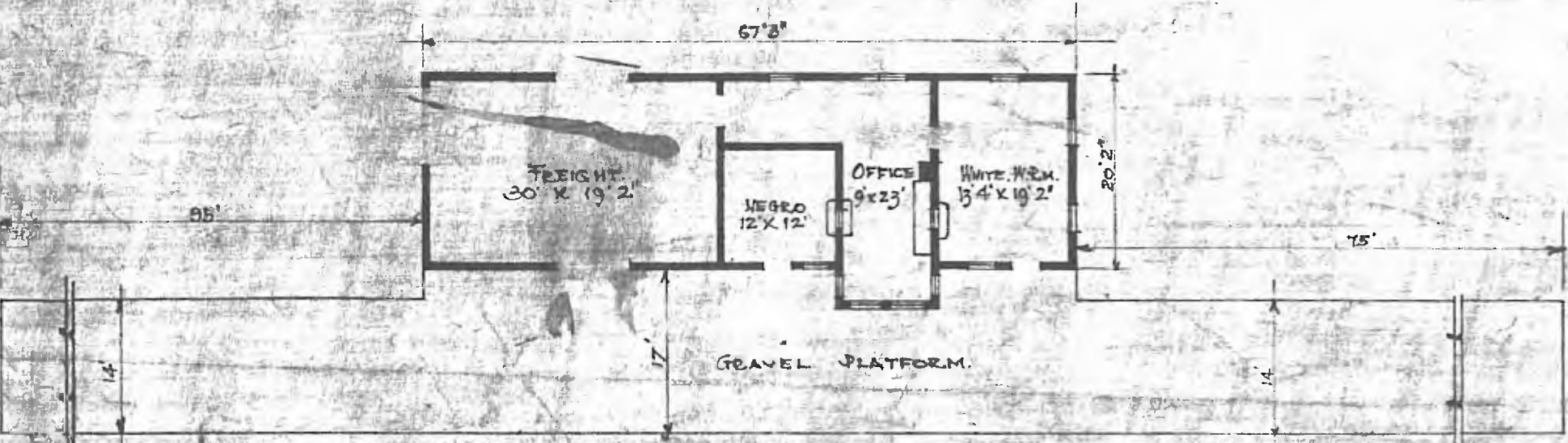


ERECTED. • 1907.
 TYPE. FRAME.
 FOUNDATION. PILE HEADS
 WALLS. 2" X 6"
 ROOF TYPE. GABLE. SHINGLES.
 HEATING. STOVES.

FLOOR. $\frac{3}{4}$ " X $3\frac{1}{4}$ " Y. PINE.
 FINISH { INSIDE. $\frac{3}{4}$ " X $3\frac{1}{4}$ " BD. CEILING
 OUTSIDE. 1" X 6" DROP SIDING
 CEILING HEIGHT. 11' 4" FRT. RM. 13' 2"
 LIGHTING. LAMPS.
 SANITARY FACILITIES. OUTSIDE TOILETS.

DIV. CENTRAL
 SUB-DIV. FT. SMITH
 STA. NO. 401



FLOOR PLAN
 SCALE 1" = 10'

COMBINATION STATION AT
 RUDY, ARK.

July 10 1907