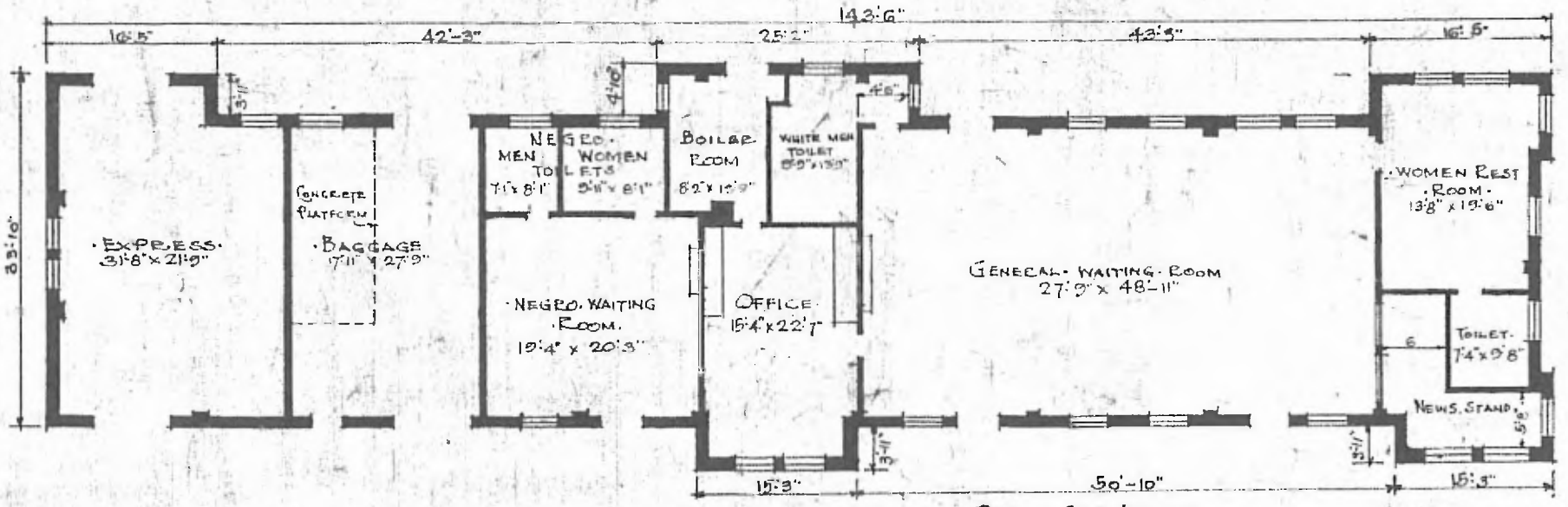


ERECTED. 1912.
 TYPE. BRICK.
 FOUNDATION. CONCRETE
 WALLS. 13"
 ROOF { TYPE FLAT COMPOSITION.
 PITCH
 HEATING. HOT WATER.
 FLOOR. CONCRETE.
 INSIDE PLASTER.
 FINISH {
 OUTSIDE BRICK.
 CEILING HEIGHT. 10'3"
 LIGHTING. ELECTRIC.
 SANITARY FACILITIES INSIDE TOILETS.

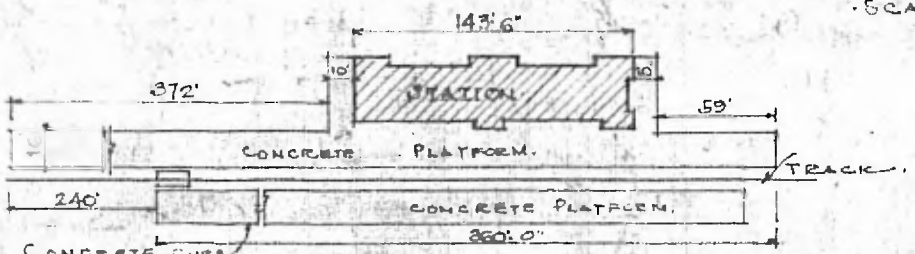


FLOOR PLAN.
 SCALE 1/16" = 1'0"

DIV. CENTRAL
 SUB. DIV. FT. SMITH
 STA. NO. 333



PASSENGER STATION AT
 ROGERS ARK.



PLOT PLAN.
 SCALE 1/8" = 1'0"