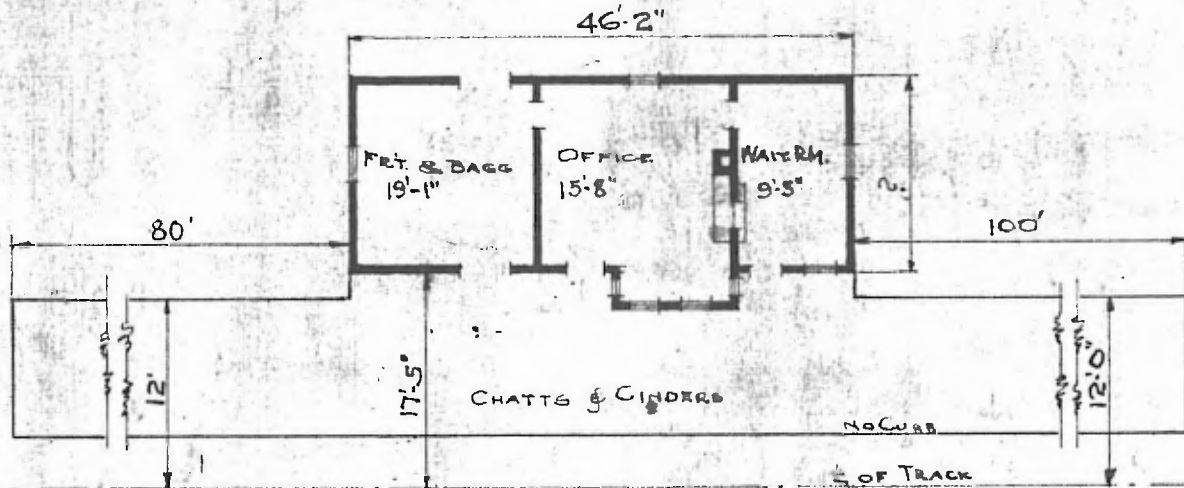


ERECTED 1890  
 TYPE FRAME  
 FOUNDATION BLOCKS  
 WALLS 2x4  
 ROOF { TYPE GABLE-SHINGLES  
 PITCH 1/2  
 HEATING STOVES

FLOOR 7  
 8x2 1/2  
 FINISH { INSIDE 7/8x3 1/4  
 OUTSIDE BOXING-DROP SIDING  
 CEILING HEIGHT 11-4"  
 LIGHTING OIL  
 SANITARY FACILITIES OUTSIDE TOILET

DIV. RIVER  
 SUB. P.V. 170XIE  
 STA 116+71.32 (67)



FLOOR PLAN  
 SCALE: 1/16" = 1'-0"

COMBINATION STATION  
 REYNO, ARK.

Aug. 21, 1919