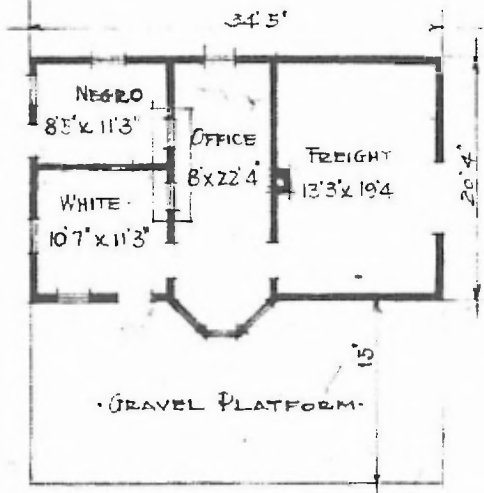




ERECTED. 1902.
 TYPE. FRAME.
 FOUNDATION. PILE HEADS.
 WALLS. 2" x 4"
 ROOF { TYPE. HIP SHINGLES.
 PITCH. 1/8
 HEATING. STOVES.

FLOOR. 1" x 6" Y. PINE.
 FINISH { INSIDE. 3/4" x 5 1/2" BUN CEILING.
 OUTSIDE. BOARD & BATT.
 CEILING HEIGHT. 10' 7"
 LIGHTING. LAMPS.
 SANITARY FACILITIES. OUTSIDE TOILETS.



FLOOR PLAN.
 SCALE 1/16" = 1'-0"

DIV. CENTRAL
 SUB. DIV. ARKINDA
 STA. NO. W657

COMBINATION STATION AT
 RED BLUFF ARK.

COMBINATION STATION AT
 RED BLUFF ARK
 JULY 6 1915