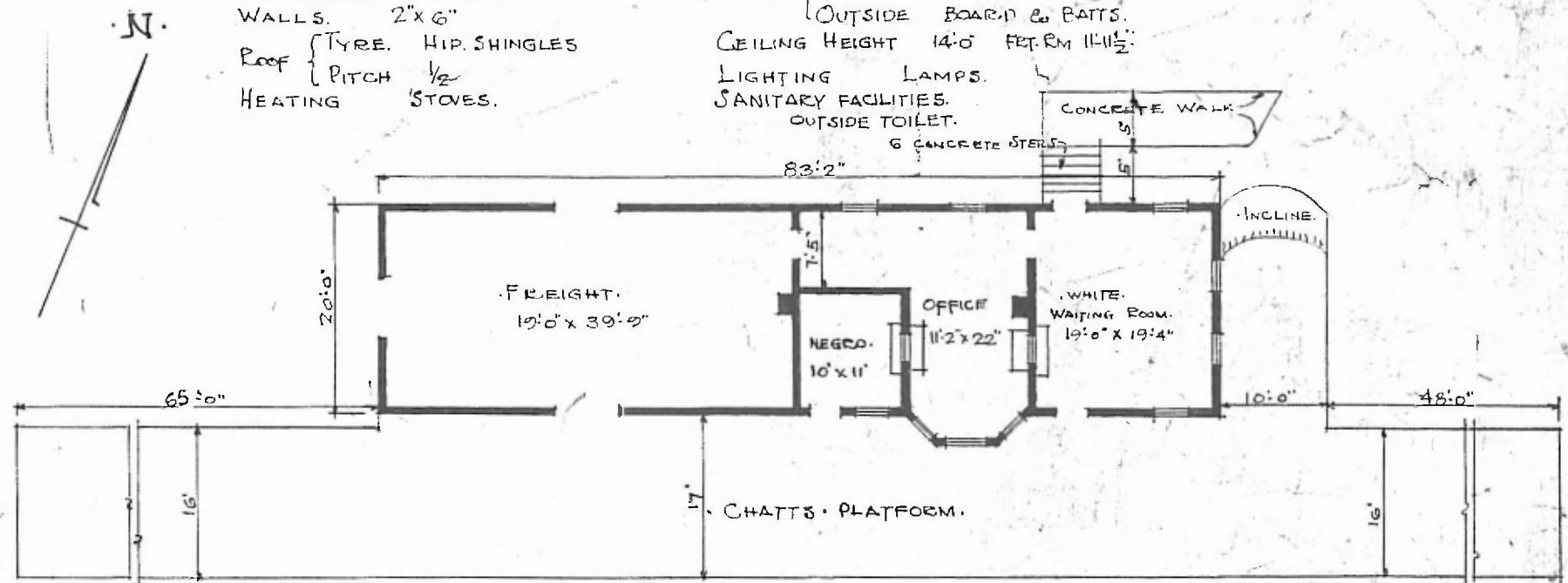


ERECTED 1902.
 TYPE. FRAME.
 FOUNDATION. PILE HEADS
 WALLS. 2"x6"
 ROOF { TYRE. HIP. SHINGLES
 { PITCH 1/2
 HEATING STOVES.

FLOOR 3/4" x 3 1/4" Y. PINE.
 INSIDE 3/4" x 3 1/4" BO.
 FINISH {
 { OUTSIDE BOARD & BATT.
 CEILING HEIGHT 14'-0" FET. RM 11'-11 1/2"
 LIGHTING LAMPS.
 SANITARY FACILITIES.
 OUTSIDE TOILET.



FLOOR PLAN.
 SCALE 1/16" = 1'-0"
 SW-DIV. RED RIVER
 SUB. DIV. MUSKOGEE
 STA. NO. Y-365

COMBINATION STATION AT
 PRAIRIE GROVE ARK.

AUG. 18. 1915.