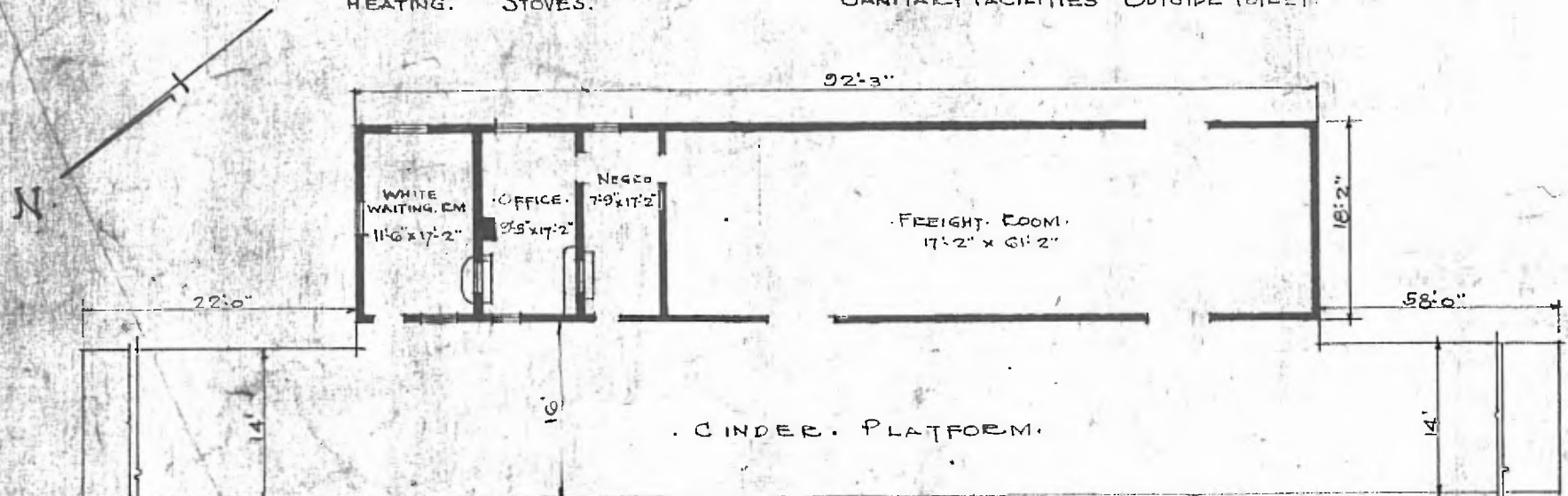


ERECTED: 1903  
 TYPE: FRAME.  
 FOUNDATION: PILE HEADS.  
 WALLS: 2"x6"  
 ROOF: { TYPE: GABLE SHINGLE  
 PITCH: 1/3  
 HEATING: STOVES.

FLOOR: 3/4" x 3 1/2" Y. PINE.  
 FINISH { INSIDE 3/4" x 3 1/2" BO. CEILING  
 OUTSIDE 1"x6" DROP SIDING.  
 CEILING HEIGHT: 11'-5"  
 LIGHTING: LAMPS  
 SANITARY FACILITIES: OUTSIDE TOILET.



FLOOR PLAN.  
 SCALE 1/16" = 1'-0"

DIV. CENTRAL  
 SUB. DIV. FT. SMITH  
 STA. NO. A 395  
 (ST. PAUL BRANCH)

COMBINATION STATION AT  
 PETTIGREW ARK.

AUG. 6. 1915.