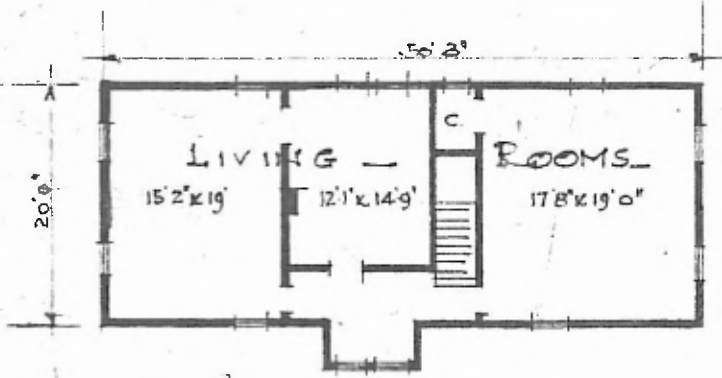
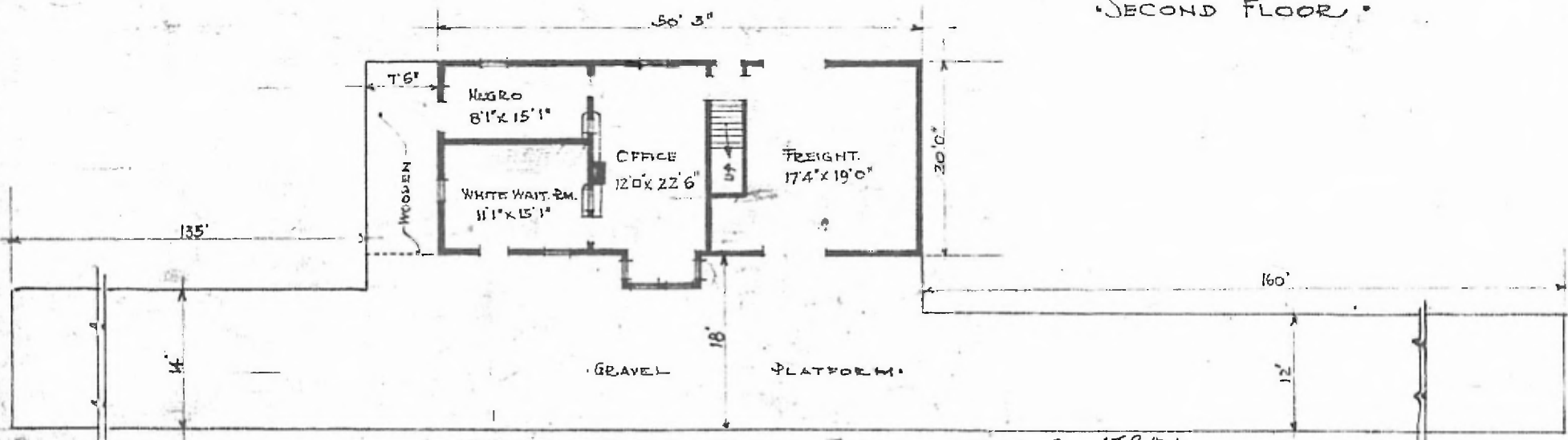


ERECTED . 1892
 TYPE . FRAME.
 FOUNDATION . PILE HEADS.
 WALLS . 2"x6"
 ROOF { TYPE . GABLE . SHINGLES.
 PITCH 1/3
 HEATING . STOVES .

FLOOR . $\frac{3}{4}$ " x $3\frac{1}{4}$ " Y. PINE.
 FINISH { INSIDE . $\frac{3}{4}$ " x $3\frac{1}{4}$ " B.D. CEILING.
 OUTSIDE BOARD & BATTYS.
 CEILING HEIGHT . 10'0" 2ND 8'8" FEET RM. 10'0"
 LIGHTING . LAMPS .
 SANITARY FACILITIES . OUTSIDE TOILET .



SECOND FLOOR .



FLOOR PLAN .
SCALE $\frac{1}{16}$ - 1'0"



DIV. CENTRAL
 SUB DIV. FT. SMITH
 STA. No. 390

COMBINATION STATION AT
 MOUNTAINBURG ARK.

- JULY 17 1915 -