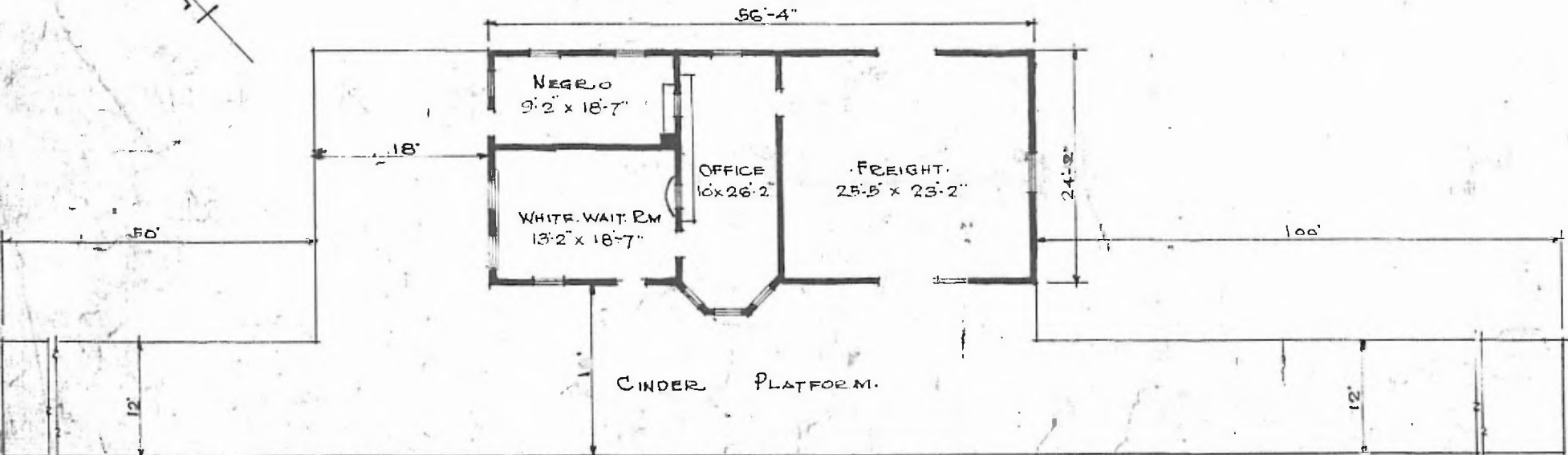
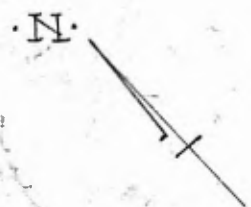


ERECTED. 1909.
 TYPE. FRAME.
 FOUNDATION. CONCRETE.
 WALLS. 2" x 6"
 ROOF { TYPE. HIP SHINGLES
 { PITCH. 1/3
 HEATING. STOVES

FLOOR. 2 1/4" MAPLE
 FINISH { INSIDE 5/4 x 3 1/4" V. JOINT
 { OUTSIDE 1" x 4" DROP SIDING
 CEILING HEIGHT. 11'-4"
 LIGHTING. LAMPS.
 SANITARY FACILITIES. OUTSIDE TOILET



FLOOR PLAN.
 SCALE. 1/8" = 1'-0"

DIV. CENTRAL
 SUB. DIV. ARTHUR
 STA. No. B-1440

COMBINATION STATION AT
 MIDLAND ARK.