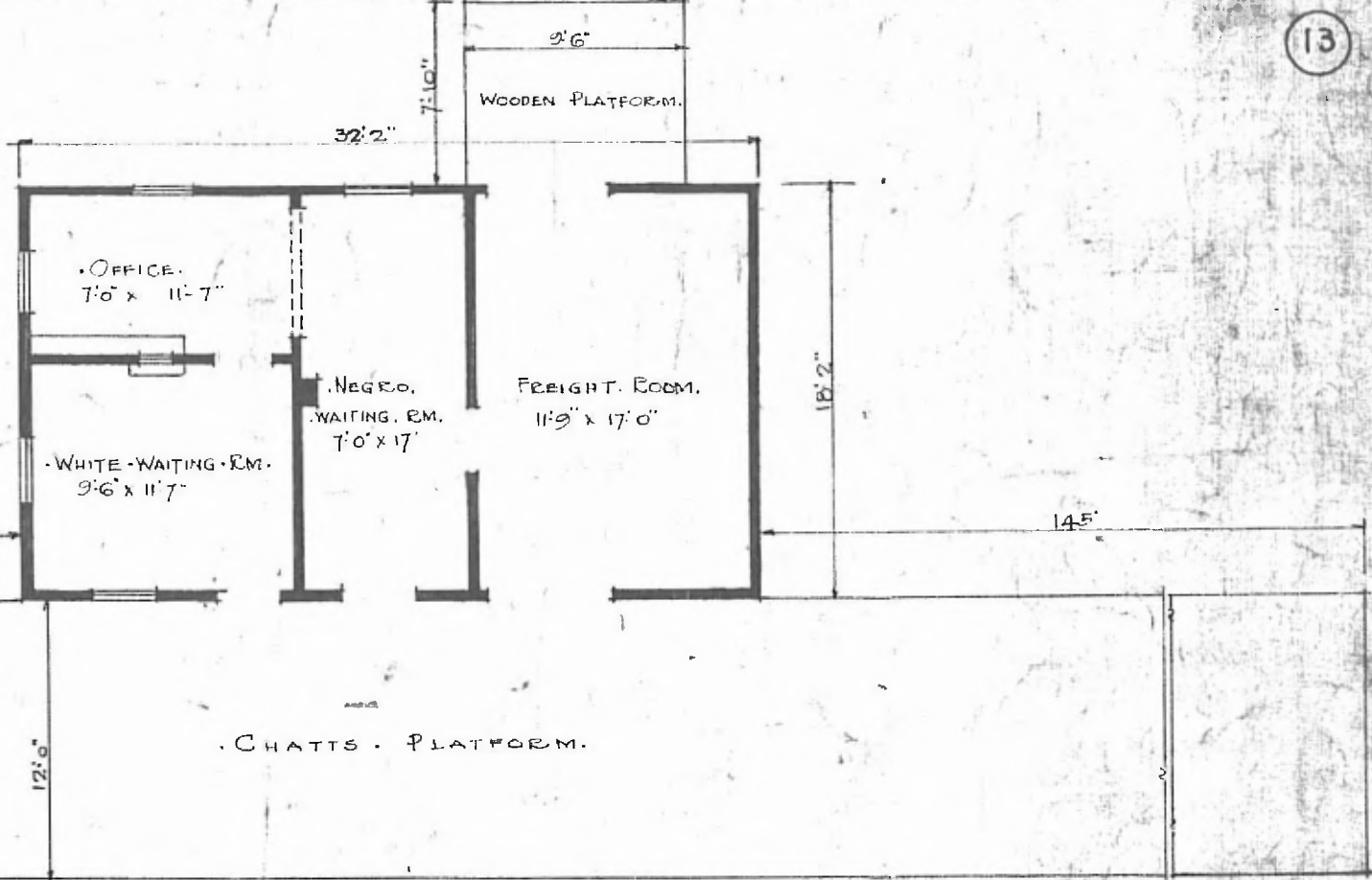


ERECTED. 1882.
 TYPE. FRAME.
 FOUNDATION. PILE HEADS.
 WALLS. 2" x 6"
 ROOF { TYPE GABLE. SHINGLES.
 { PITCH
 HEATING. STOVES.
 FLOOR. 3/4" x 3 1/4" Y. PINE.
 FINISH { INSIDE 3/4" x 5 1/4" BD. CEILING
 { OUTSIDE. BOARD & BATTIS.
 CEILING HEIGHT. 14'-3 1/2" FETEM
 NEGRO - 10' 0"
 LIGHTING. LAMPS.
 SANITARY FACILITIES. OUTSIDE TOILETS.
 18'



FLOOR PLAN.
 SCALE 1/8" = 1'0"

DIV. CENTRAL
 SUB. DIV. FT. SMITH
 STA. No. 338

COMBINATION STATION AT
 LOWELL, ARK.

JULY 22 1915