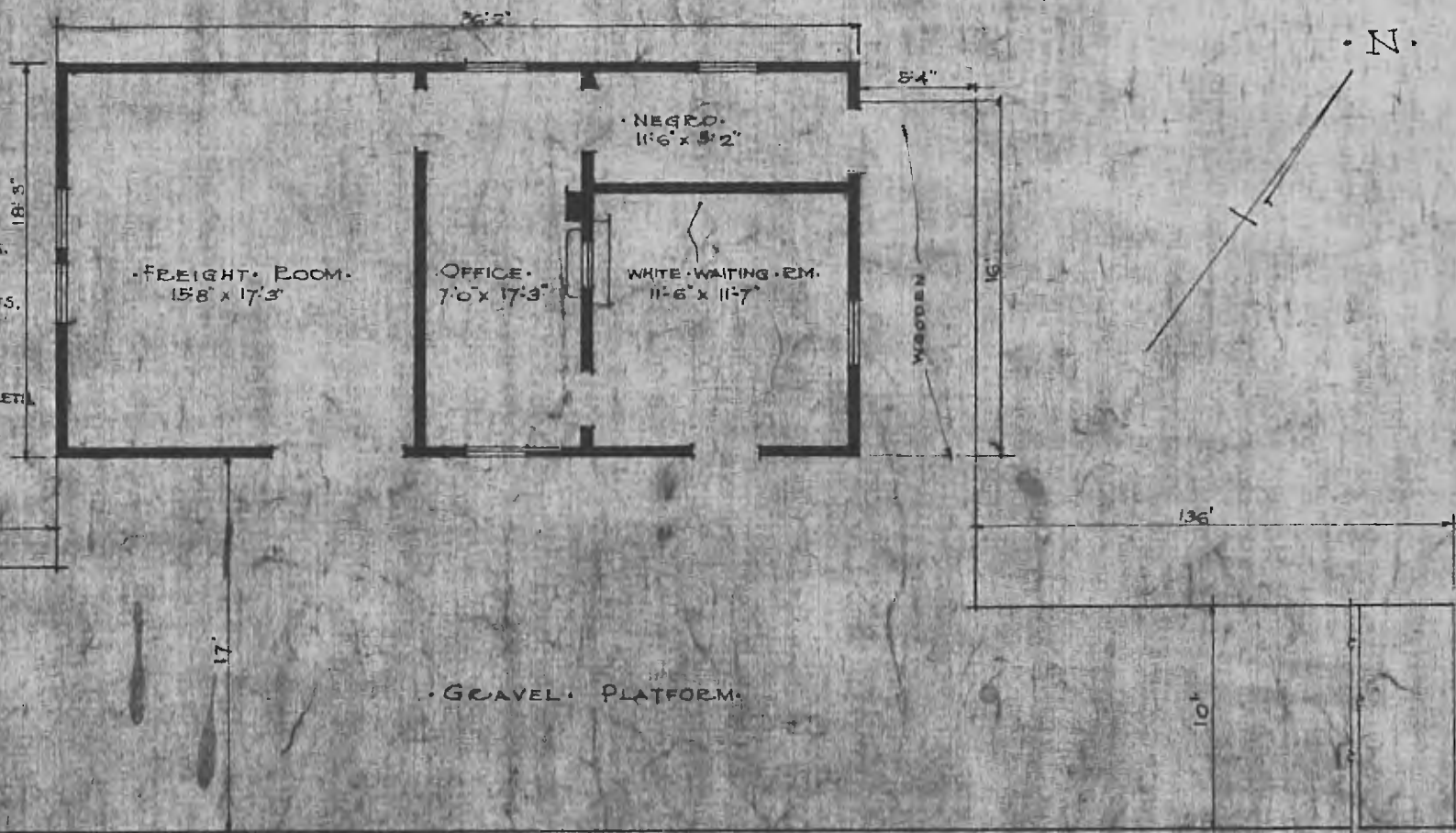


DIV. CENTRAL
SUB. DIV. FT. SMITH
STA. NO. 347

- ERECTED. 1902.
- TYPE. FRAME.
- FOUNDATION. 6x8 POST.
- WALLS. 2x6
- ROOF { TYPE. GABLE. SHINGLES.
PITCH: 1/3
- HEATING. STOVES.
- FLOOR. 2" x 3 1/4" Y. PINE.
- FINISH { INSIDE. 2" x 3 1/2" BO. CEILING.
OUTSIDE. BOARDS & BATTIS.
- CEILING HEIGHT. 10-7"
- LIGHTING. LAMPS.
- SANITARY FACILITIES. OUTSIDE TOILET.



FLOOR PLAN
SCALE 1/8" = 1'-0"

COMBINATION STATION AT
JOHNSONS ARK.

JULY 21 1915