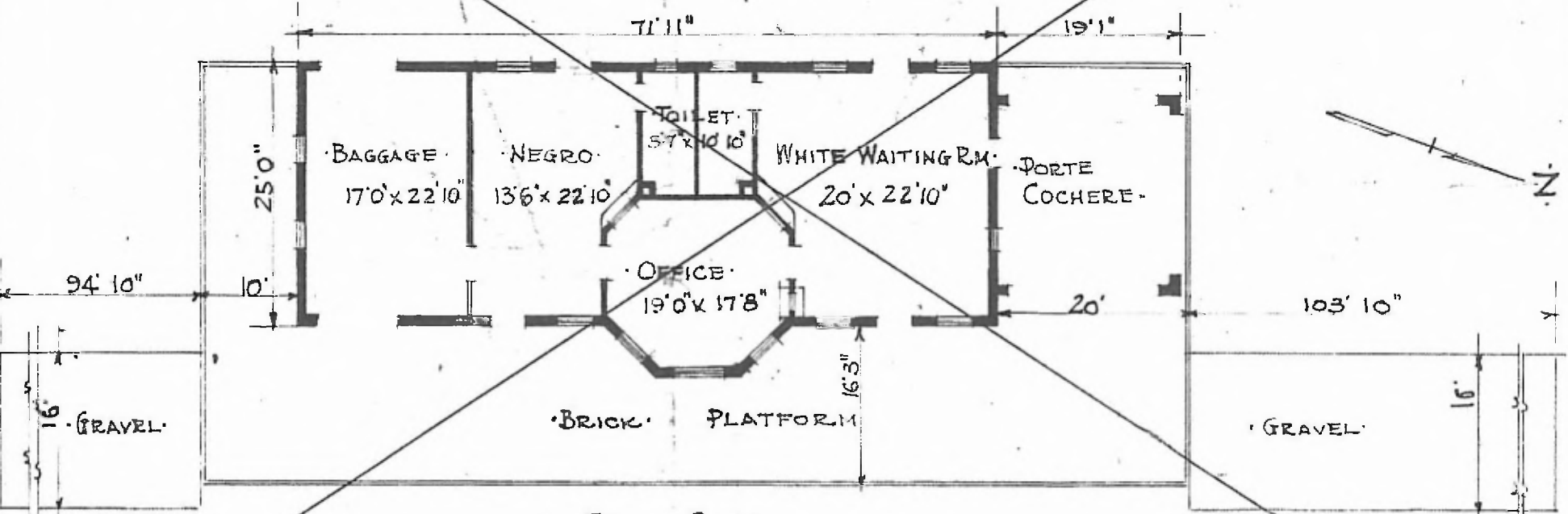


ERECTED: 1906.  
 TYPE: PRESSED BRICK.  
 FOUNDATION: CONCRETE.  
 WALLS: 13"  
 ROOF: TYPE HIP TILE.  
 PITCH 1/8  
 HEATING: NAT. GAS STOVES.

FLOOR: 3/4" Y. PINE.  
 FINISH: INSIDE: PLASTER ROUGH.  
 OUTSIDE: BRICK.  
 CEILING HEIGHT: 13' 1/2"  
 LIGHTING: ELECTRIC 2 WIRE 110 A.C.  
 SANITARY FACILITIES: INSIDE TOILET.



FLOOR PLAN.  
 SCALE 1/16" = 1'-0"

PASS. STATION AT  
 HOPE, ARK.

JULY 5, 1915