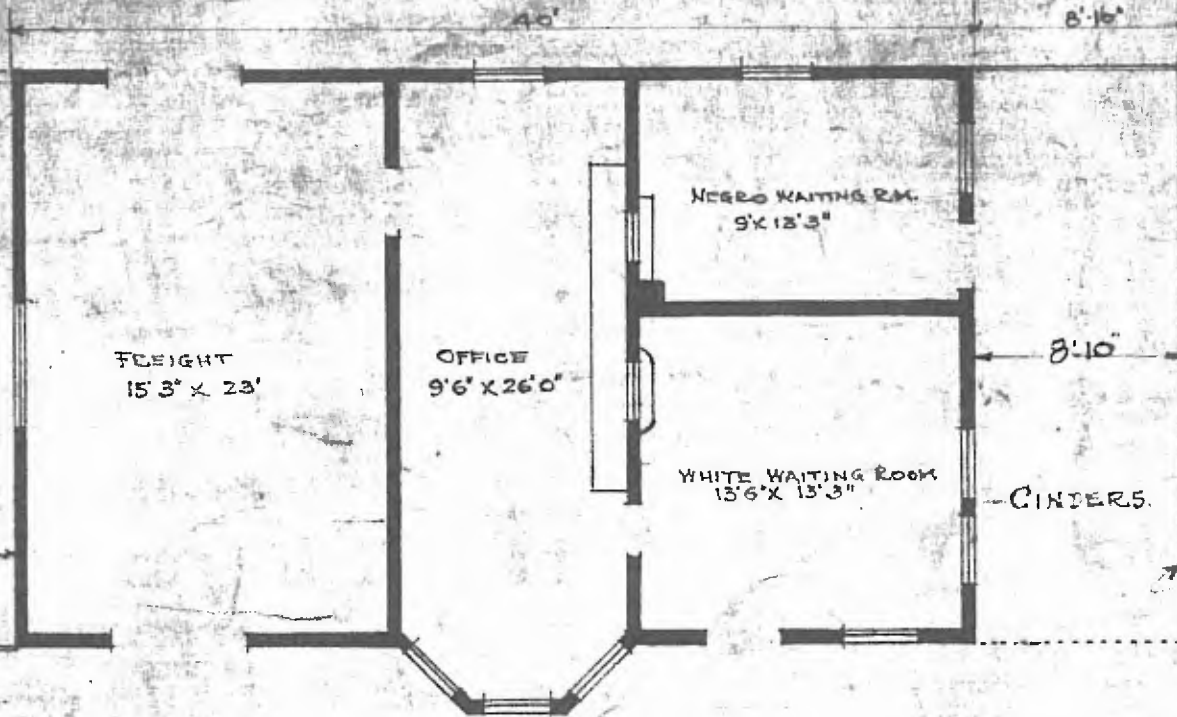


ERECTED 1906.  
 TYPE FRAME  
 FOUNDATION PILE HEADS  
 WALLS 2'x6"  
 ROOF TYPE HIP  
 PITCH 1/8  
 HEATING STOVES  
 FLOOR 3/4" x 3 1/4" Y. PINE  
 INSIDE 3/4" x 3 1/4" Sp. Ceiling  
 FINISH OUTSIDE 1x6" Drop Siding  
 CEILING HEIGHT 11'4"  
 LIGHTING LAMPS  
 SANITARY FACILITIES OUTSIDE TOILET



FLOOR PLAN  
SCALE 1/8" = 1'0"

DIV. CENTRAL  
 STA. No. 333  
 SUB. DIV. FT. SMITH

COMBINATION STATION AT  
 GREENLAND ARK.

JULY 21 1915