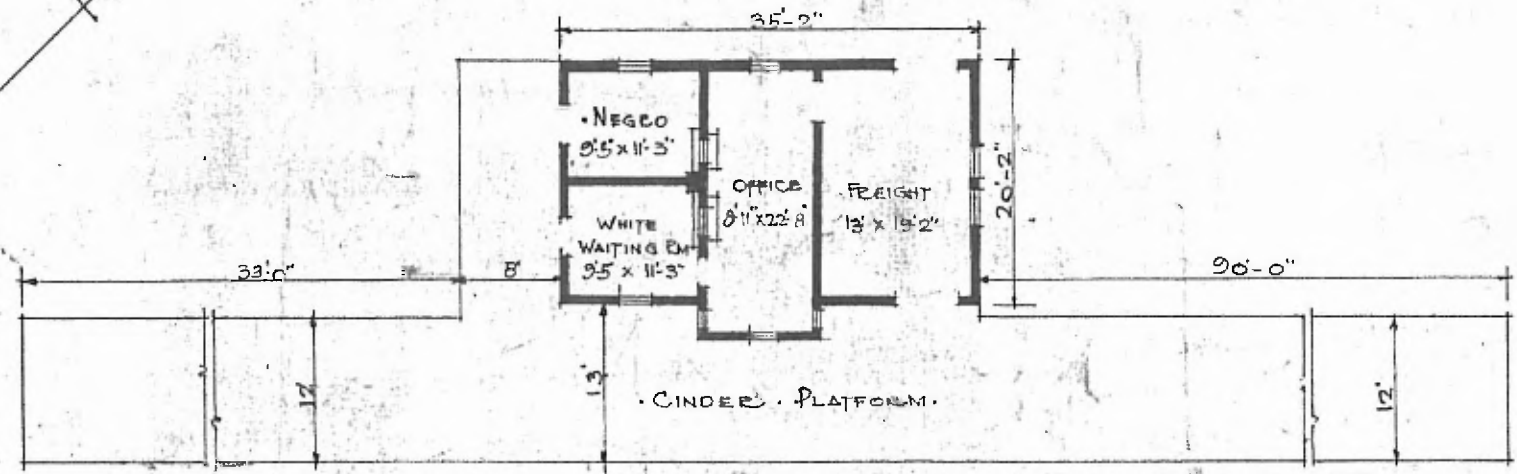
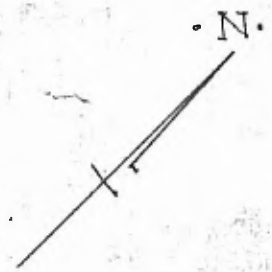


42

ERECTED. 1905.
 TYPE. FRAME
 FOUNDATION. PILE HEADS.
 WALLS. 2"x6"
 ROOF { TYPE GABLE. SHINGLES.
 PITCH 1/3
 HEATING STOVES.

FLOOR. 3/4" x 3 1/4" Y. PINE.
 FINISH { INSIDE. 3/4" x 3 1/4" BD CEILING
 OUTSIDE. BOARD & BATT.
 CEILING HEIGHT. 10'-7" FRET DM. 12'-1"
 LIGHTING. LAMPS
 SANITARY FACILITIES. OUTSIDE TOILETS.



FLOOR PLAN.
 SCALE 1/16" = 1'-0"

SW - DIV. RED RIVER
 SUB. DIV. MUSKOGEE
 STA. No. Y358

COMBINATION STATION AT
 FARMINGTON ARK.

Aug. 19. 1915.