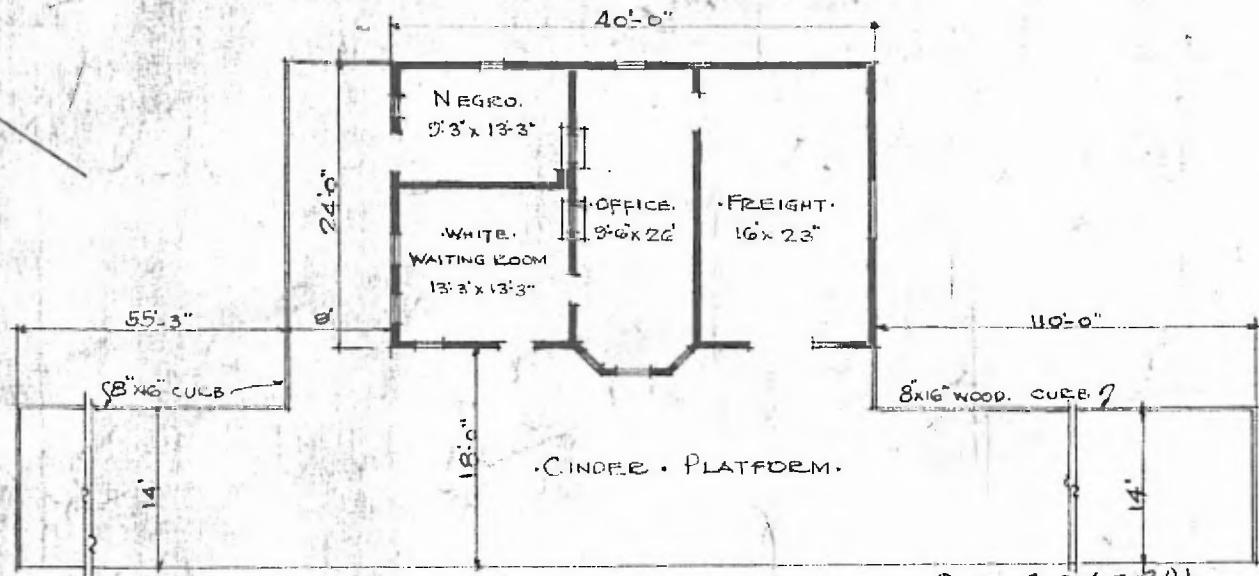
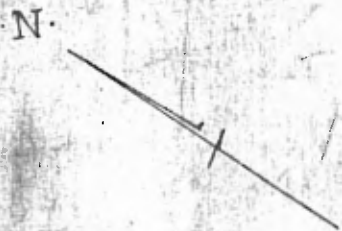


ERECTED. 1910.
 TYPE. FRAME STD.#2.
 FOUNDATION. PILE HEADS
 WALLS. 2" X 6"
 ROOF { TYPE. HIP SHINGLES
 PITCH. 1/8
 HEATING. STOVES

FLOOR. 3/4" X 3 1/4" Y. PINE.
 INSIDE. 3/4" X 3 1/4" BD. CEILING.
 FINISH { OUTSIDE 1" X 6" DROP SIDING.
 CEILING HEIGHT. 11' 3 1/2"
 LIGHTING. LAMPS.
 SANITARY. FACILITIES. OUTSIDE TOILET.



FLOOR PLAN.
 SCALE. 1/16" = 1'-0"

DIV. CENTRAL
 SUB. DIV. FT. SMITH
 STAND. A366
 (ST. PAUL BRANCH)

COMBINATION STATION AT
 ELKINS ARK.

AUG. 12. 1915.