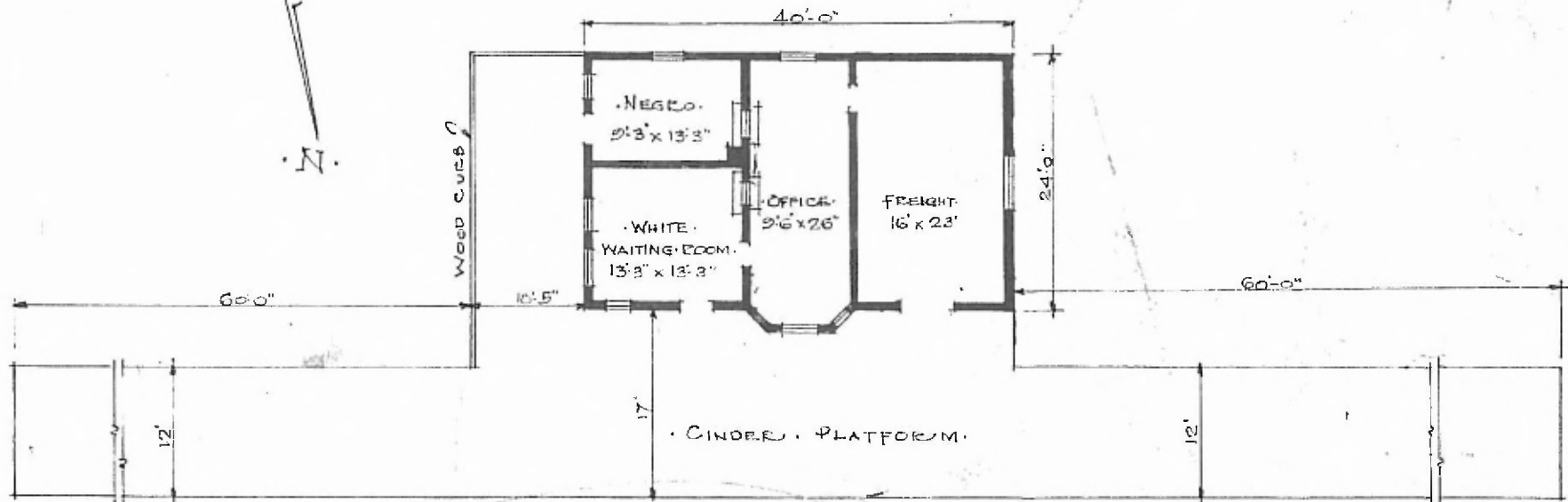


34.

ERECTED. 1910.
 TYPE. FRAME STD #2
 FOUNDATION. CONCRETE.
 WALLS 2' x 6"
 ROOF { TYPE. HIP SHINGLES
 PITCH 1/3
 HEATING. STOVES.

FLOOR. 2 1/4" MAPLE.
 FINISH { INSIDE. V. JOINT CEILING
 OUTSIDE. DROP SIDING
 CEILING HEIGHT. 11'-3 1/2"
 LIGHTING. LAMPS.
 SANITARY FACILITIES. OUTSIDE TOILETS.



FLOOR PLAN.
 SCALE. 1/16" = 1'-0"

CENTRAL DIV.
 SUB. DIV. FORT SMITH
 STA. No. A393
 (ST. PAUL BRANCH)

COMBINATION STATION AT
 DUTTON - ARK.

AUG. 10. 1915.