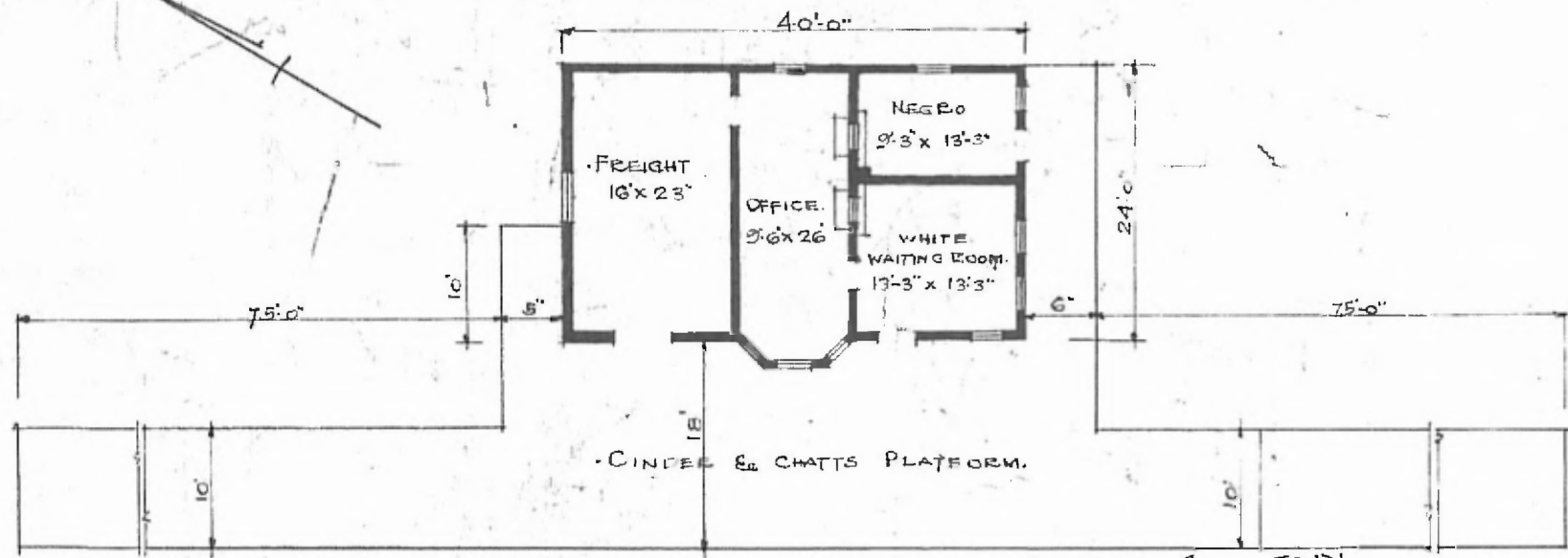


ERECTED 1911.  
 TYPE. FRAME "2"  
 FOUNDATION. CONCRETE  
 WALLS 2' x 6"  
 ROOF { TYPE. HIP SHINGLES  
 PITCH. 1/8  
 HEATING. STOVES

FLOOR. 2 1/4" MAPLE.  
 FINISH { INSIDE V. JOINT CEILING  
 OUTSIDE. 1x6" DEEP SIDING.  
 CEILING HEIGHT 11'-4"  
 LIGHTING. LAMPS.  
 SANITARY FACILITIES OUTSIDE TOILETS.



FLOOR PLAN.  
 SCALE 1/16" = 1'-0"

DIV. CENTRAL  
 SUB. DIV. FORT. SMITH  
 STA. No A-370  
 (ST. PAUL BRANCH)

COMBINATION STATION AT  
 DURHAM ARK.