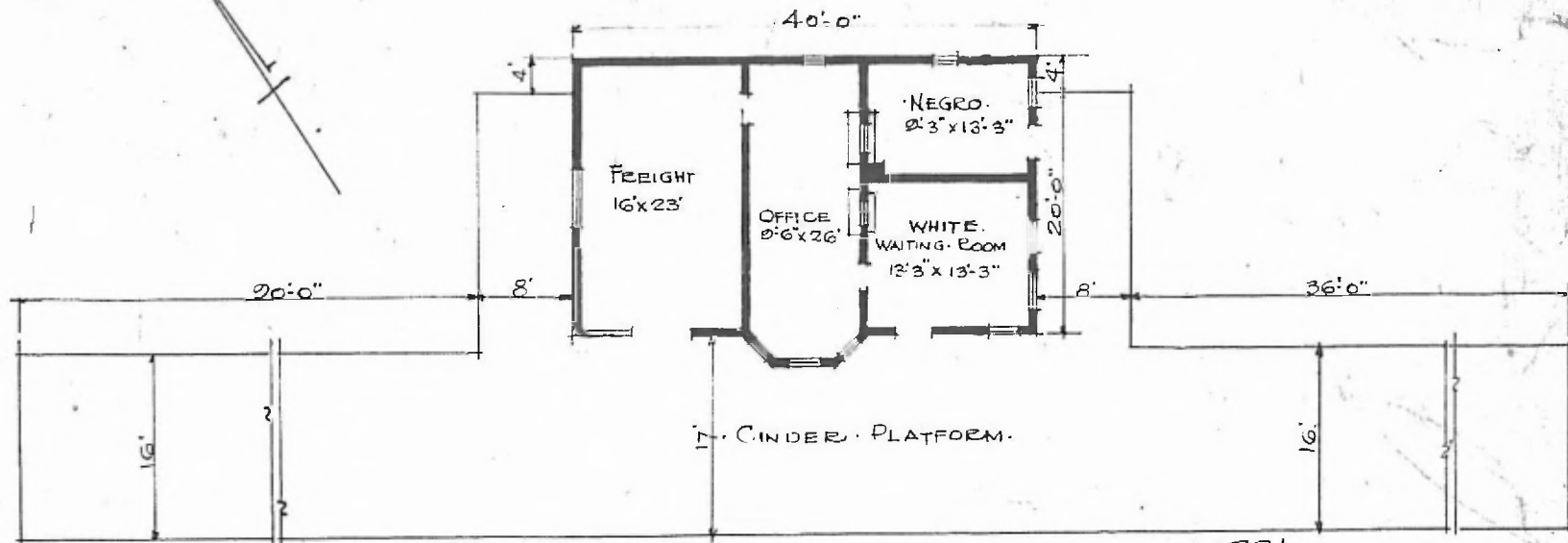


ERECTED. 1907.
 TYPE. FRAME. STD #2
 FOUNDATION. PILE HEADS.
 WALLS. 2"x6"
 ROOF { TYPE HIP SHINGLES.
 PITCH 1/3
 HEATING STOVES

FLOOR. 3/4" x 3 1/4" Y. FINE
 INSIDE. 3/4" x 3 1/4" BD. CEILING
 FINISH {
 OUTSIDE 1"x6" DROP SIDING.
 CEILING HEIGHT. 11'-4"
 LIGHTING. LAMPS
 SANITARY FACILITIES OUTSIDE TOILETS.

N.



FLOOR PLAN.
 SCALE 1/16" = 1'-0"

DIV. CENTRAL
 SUBDIV. FT. SMITH
 (ST. PAUL BRANCH)
 STA. No A-379

COMBINATION STATION AT
 DELANEY, ARK.