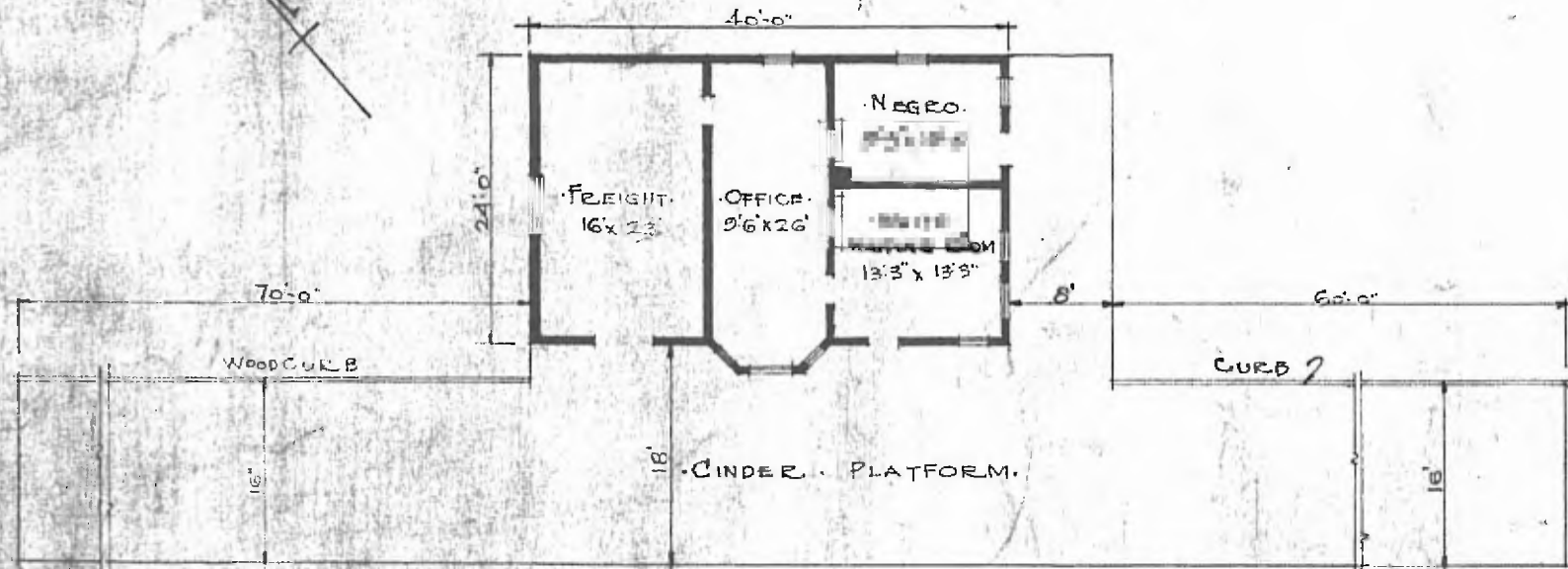


38

ERECTED. 1907.  
 TYPE. FRAME STD. #2.  
 FOUNDATION. PILE HEADS.  
 WALLS. 2" x 6"  
 ROOF { TYPE. HIP SHINGLES  
 PITCH. 1/8.  
 HEATING. STOVES.

FLOOR.  $\frac{3}{4}$ " x  $3\frac{1}{4}$ " Y. PINE.  
 FINISH. { INSIDE.  $\frac{3}{4}$ " x  $3\frac{1}{4}$ " PD. CEILING.  
 OUTSIDE 1" x 6" DROP SIDING.  
 CEILING HEIGHT. 11'-5".  
 LIGHTING. LAMPS.  
 SANITARY FACILITIES. OUTSIDE TOILETS.



FLOOR PLAN.  
 SCALE.  $\frac{1}{16} = 1'-0"$

DIV. CENTRAL  
 SUB-DIV. FT. SMITH  
 STA NO. A383  
 (ST. PAUL BRANCH)

COMBINATION STATION AT  
 COMBS ARK.

Aug 13 1915