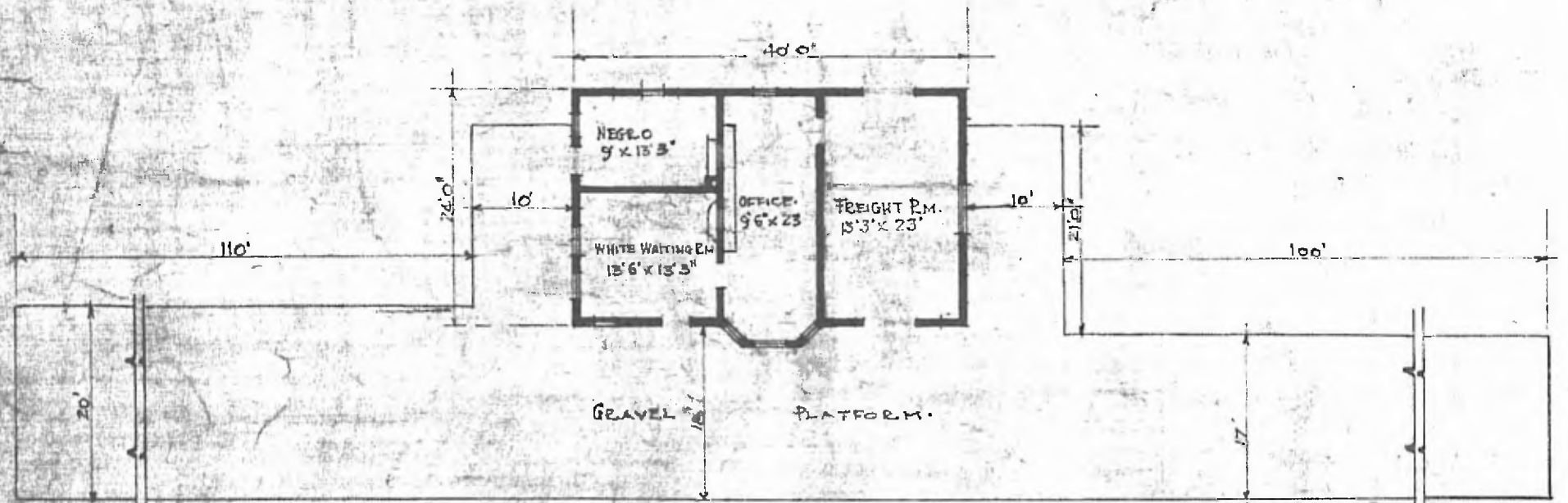


14

ERECTED. 1907.
 TYPE. FRAME
 FOUNDATION. CONCRETE.
 WALLS. 2"x6"
 ROOF { TYPE. HIP SHINGLES.
 PITCH. 1/3
 HEATING. STOVES.

FLOOR. 2 1/4" MAPLE.
 FINISH { INSIDE. 3/4"x3 1/4" V. JOINT
 OUTSIDE. 6" DROP SIDING.
 CEILING HEIGHT. 11'5"
 LIGHTING. LAMPS.
 SANITARY FACILITIES. OUTSIDE TOILET.



FLOOR PLAN:
 SCALE 1/4" = 10'

DIV. CENTRAL
 SUB. DIV. FT. SMITH
 STA. NO. 386

COMBINATION STATION AT
 CHESTER ARK.

JULY 16 1915.