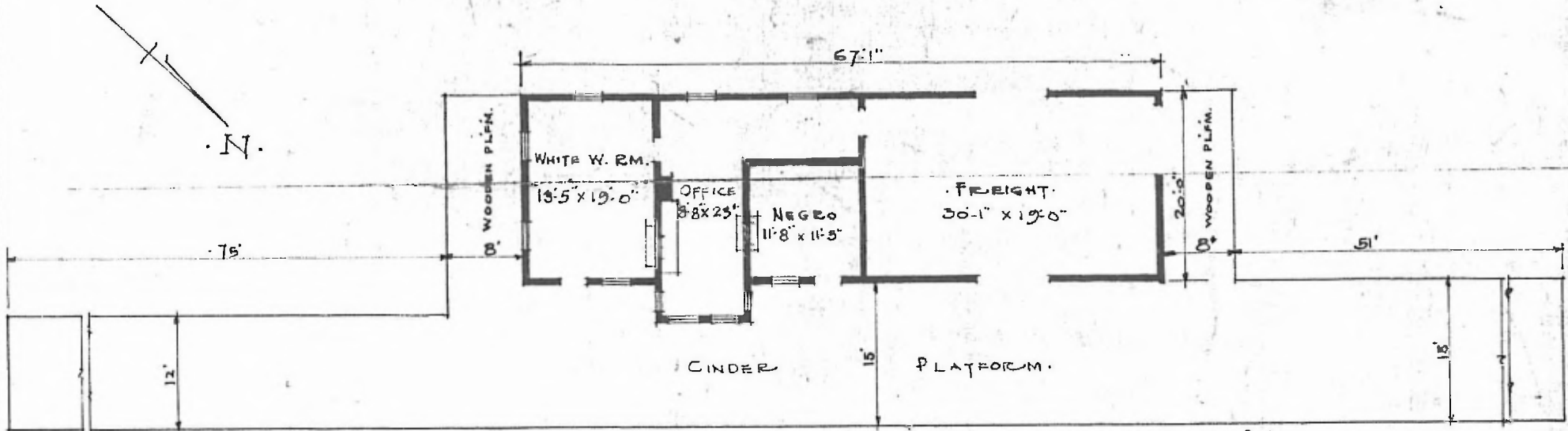


ERECTED. 1905.
 TYPE FRAME
 FOUNDATION PILE HEADS
 WALLS 2"x6"
 ROOF { TYPE GABLE SHINGLE
 { PITCH $\frac{1}{3}$
 HEATING STOVES.

FLOOR $\frac{3}{4}$ " x $3\frac{1}{4}$ " Y. PINE
 FINISH { INSIDE. $\frac{3}{4}$ " x $3\frac{1}{4}$ " Bd. CEILING
 { OUTSIDE 1x6 OG. DROP SIDING
 CEILING HEIGHT 11.5' FT RM 13.4'
 LIGHTING LAMPS.
 SANITARY FACILITIES OUTSIDE TOILETS.



FLOOR PLAN.
 SCALE $\frac{1}{16}$ " = 1'-0".
 DIV. CENTRAL
 SUB. DIV. FT. SMITH
 STA. NO. B342

COMBINATION STATION AT
 CENTERTON ARK.