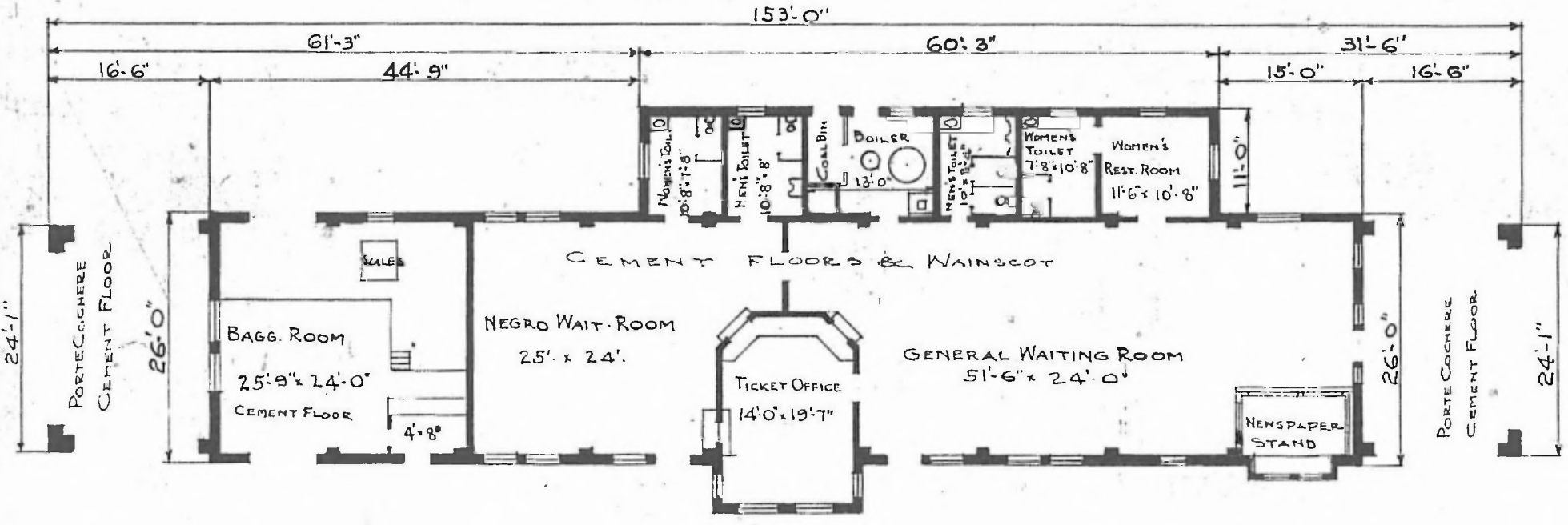


42

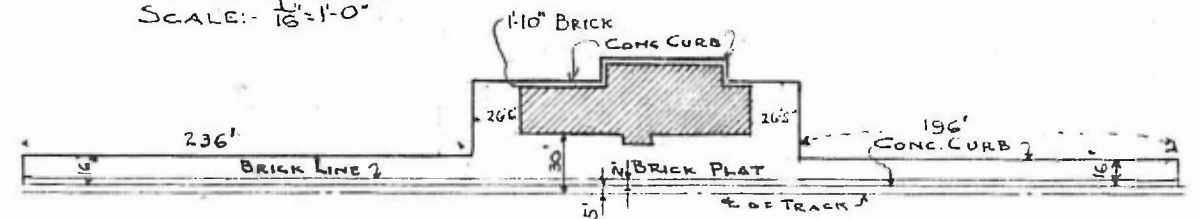
ERECTED 1917
 TYPE HOLLOW TILE
 FOUNDATION CONCRETE
 WALLS 8" TILE
 ROOF { TYPE FLAT COMPOSITION ROOFING
 PITCH 3/4" TO 1'-0"
 HEATING HOT WATER

FLOOR 6" CONCRETE
 FINISH { INSIDE PLASTER
 OUTSIDE CEMENT
 CEILING HEIGHT 12'-0"
 LIGHTING ELECTRIC
 SANITARY FACILITIES INSIDE TOILETS

DIV. RIVER
 S. B. DIV. CHAFFEE
 STA. NO. T 237



FLOOR PLAN
 SCALE: 1/16" = 1'-0"



PLOT PLAN
 SCALE: 1/100'

PLANS IN OFFICE

PASSENGER STATION
 BLYTHEVILLE, ARK.