

ERECTED
 TYPE
 FOUNDATION
 WALLS
 ROOF { TYPE
 PITCH
 HEATING

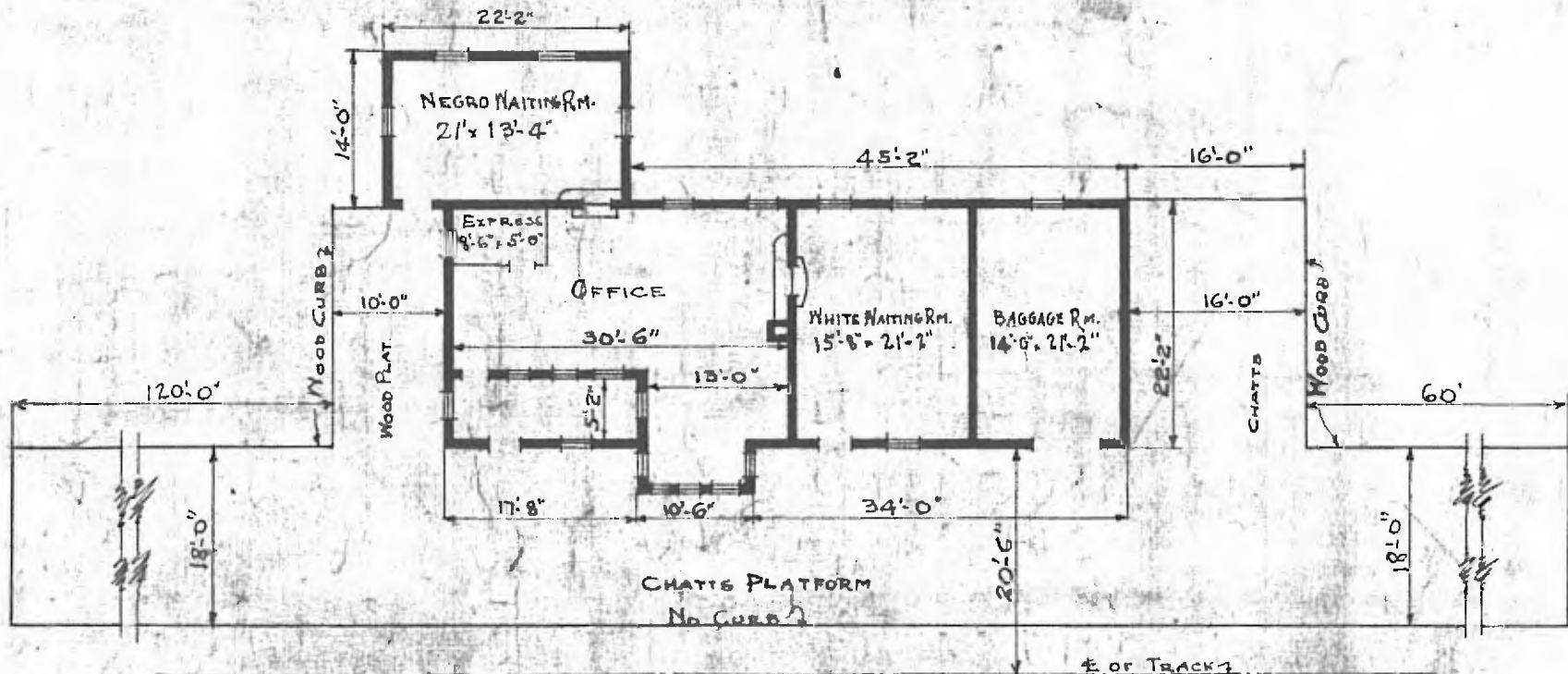
FRAME
 PILES
 2 1/2" G"
 HIP-GABLE - SHINGLES
 3
 STOVES

FLOOR
 FINISH { INSIDE
 OUTSIDE
 CEILING HEIGHT
 LIGHTING
 SANITARY FACILITIES

7' 1 3/4"
 8' 3 3/4"
 7' 5 1/2" M & B.
 BOXING & BATTENS
 11' 6"
 ELECTRIC
 OUTSIDE TOILETS

DIV. SOUTHERN
 SUB. DIV. C390
 MEMPHIS
 STA. NO. C390

(21)



FLOOR PLAN
 SCALE 1/16" = 1'-0"



PASSENGER STATION AT
 BLACK ROCK, ARK.

Aug. 5, 1919