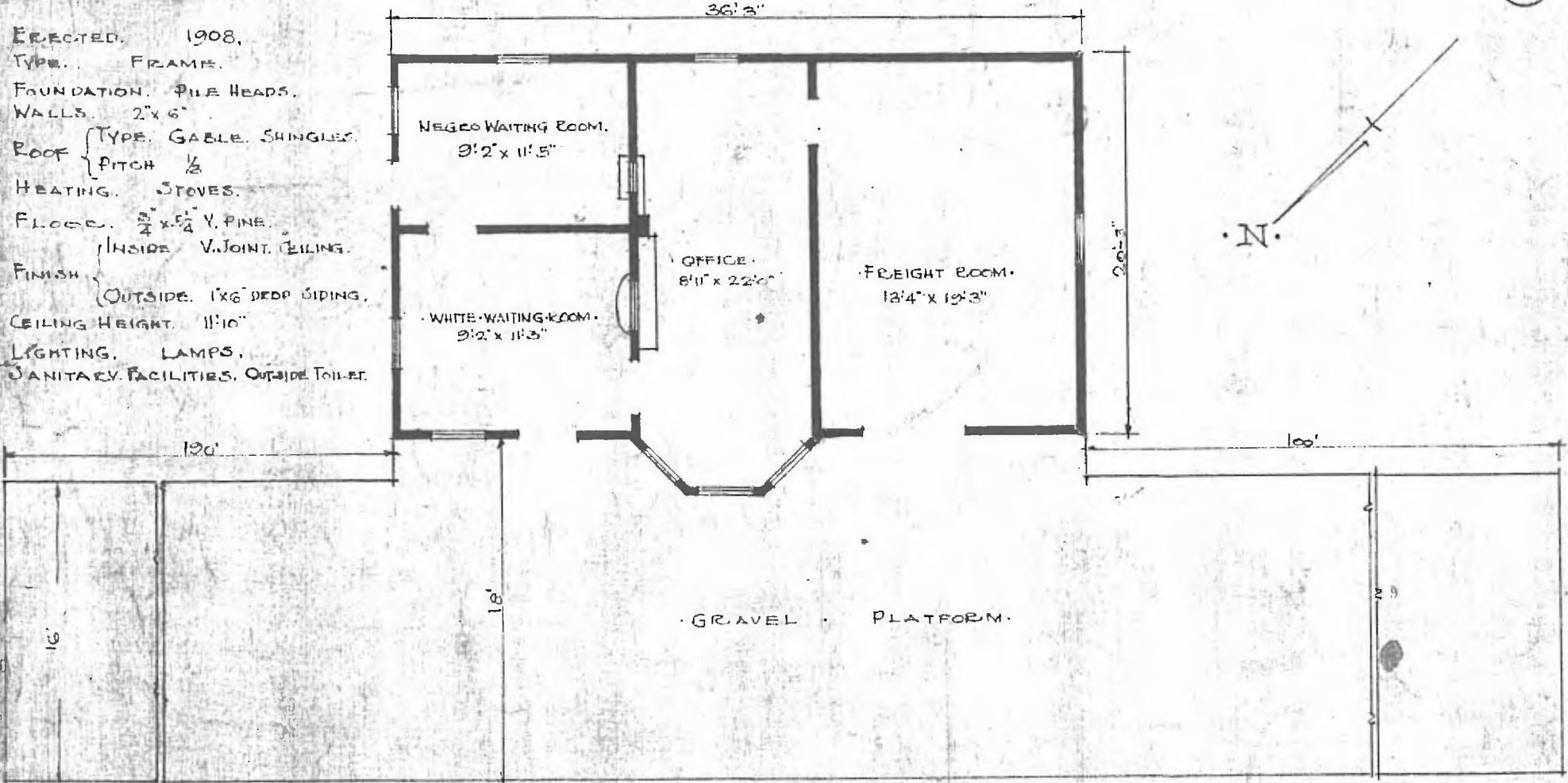


ERECTED. 1908.  
 TYPE. FRAME.  
 FOUNDATION. PILE HEADS.  
 WALLS. 2" x 6"  
 ROOF { TYPE. GABLE. SHINGLES.  
 { PITCH  $\frac{1}{2}$   
 HEATING. STOVES.  
 FLOOR.  $\frac{3}{4}$ " x  $\frac{5}{8}$ " V. PINE.  
 FINISH { INSIDE V. JOINT. CEILING.  
 { OUTSIDE. 1" x 6" DECK SIDING.  
 CEILING HEIGHT. 11'10"  
 LIGHTING. LAMPS.  
 SANITARY FACILITIES. OUTSIDE TOILET.



FLOOR PLAN.  
 SCALE.  $\frac{1}{8}" = 1'0"$ .  
 DIV. CENTRAL  
 SUB. DIV. FT. SMITH  
 STA. NO 327

COMBINATION STATION AT  
 AVOCA, ARK.

JULY 23 1915.