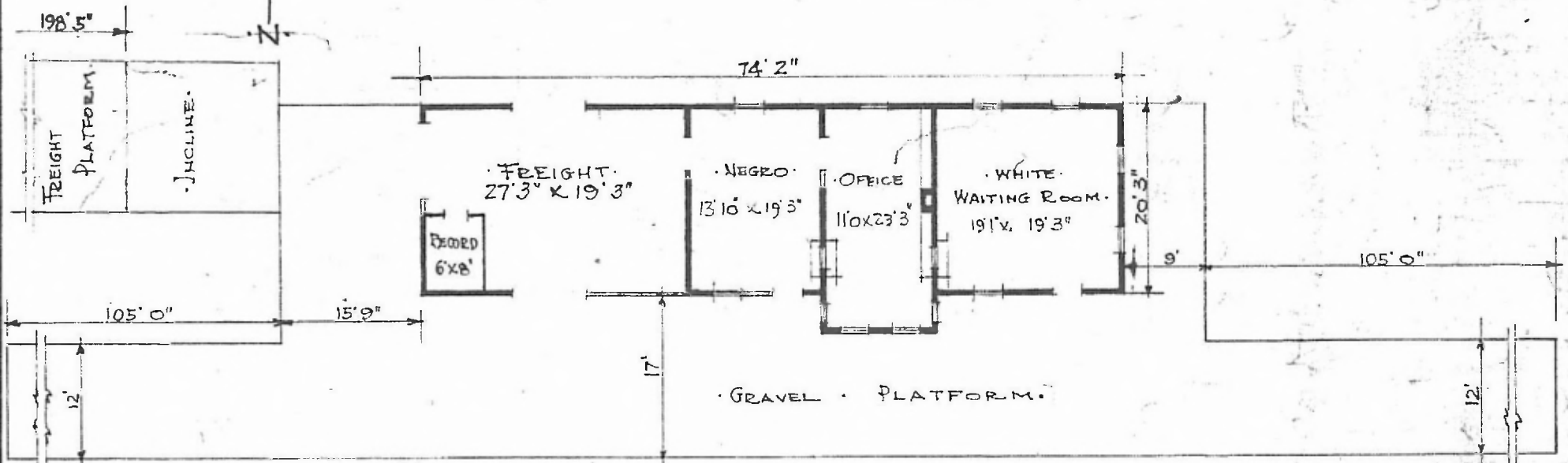


ERECTED. 1902.  
 TYPE. FRAME.  
 FOUNDATION. PILE HEAD & BLOCKS.  
 WALLS. 2"KG"  
 ROOF { TYPE. GABLE. SHINGLE.  
 PITCH 1/3  
 HEATING. STOVES.

FLOOR. 3/4" x 3/4" Y. PINE.  
 FINISH { INSIDE. 3/4" RD. CEILING.  
 OUTSIDE. BOARD & BATT.  
 CEILING HEIGHT. 12'0" FR. 13'0"  
 LIGHTING. ELECTRIC. 2 WIRE. 110 A.C.  
 SANITARY FACILITIES. OUTSIDE TOILETS.



DIV. CENTRAL  
 SUB. DIV. ARKINDA  
 STA. NO. W647

FLOOR PLAN.  
 SCALE. 1/16" = 1'0"

COMBINATION STATION AT  
 ASHDOWN, ARK.