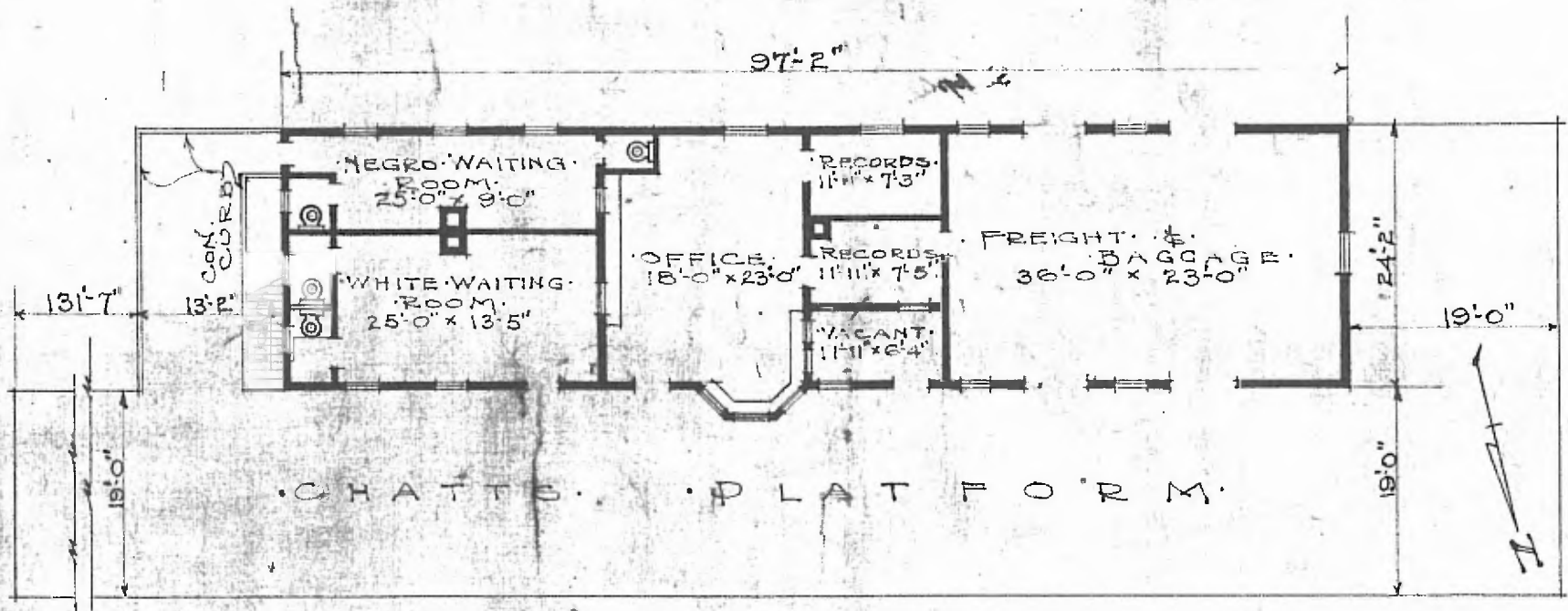


80

- ERECTED • 1914
- TYPE • FRAME
- FOUNDATION • CONCRETE
- WALLS • 2" x 6"
- ROOF • TYPE HIP, SHINGLES
- HEATING • PITCH $\frac{1}{2}$ STOVES

- FLOOR • 8" x 3 1/4" Y.P.
- FINISH • { INSIDE 3/4" x 3/4" M. & J.
OUTSIDE 3/4" x 5/4" DROP SIDING.
- CEILING HEIGHT • 11'-3"
- LIGHTING • OIL LAMPS.
- SANITARY FACILITIES • INSIDE TOILETS.

Div. SOUTHERN
SUB. DIV. BIRMINGHAM
STA. No. C-655



FLOOR PLAN.
SCALE 1/16" = 1'-0"

• COMBINATION STATION •
• WINFIELD ALA •

JUNE 30, 1919.