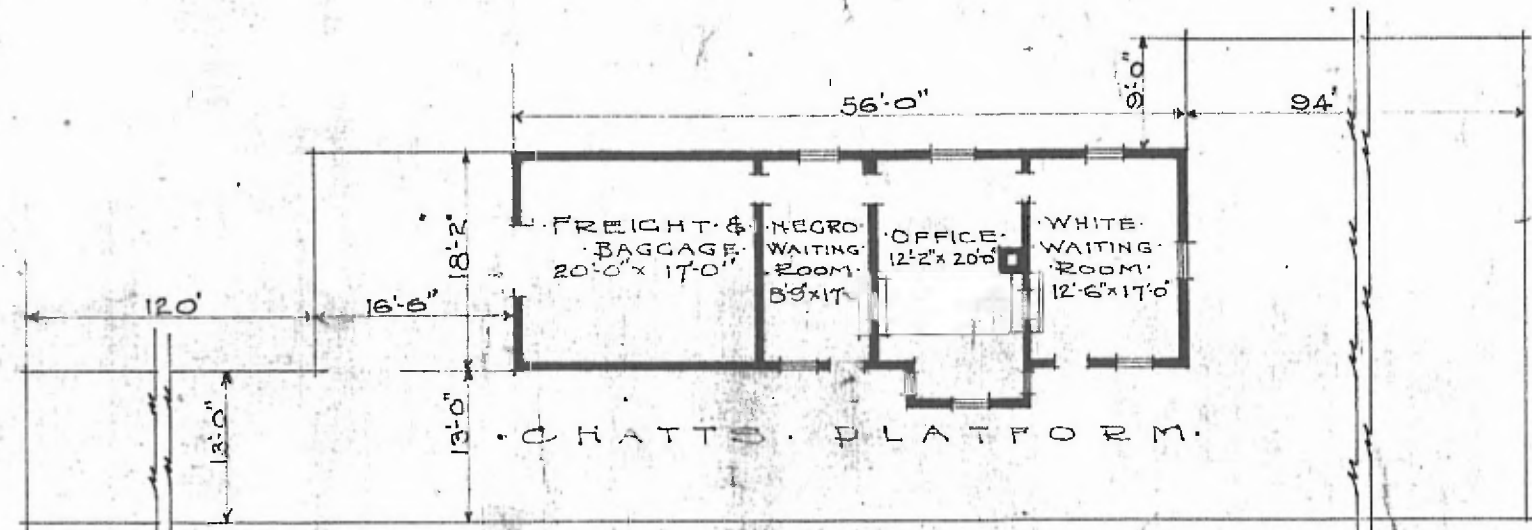


86

- ERECTED.
- TYPE. FRAME
- FOUNDATION. WOOD BLOCKS.
- WALLS. 2" x 6"
- ROOF. TYPE. GABLE, SHINGLES.
PITCH. 1/4
- HEATING. STOVES.

- FLOOR.
- FINISH. (INSIDE / OUTSIDE)
- CEILING HEIGHT. 10'-8"
- LIGHTING. OIL LAMPS
- SANITARY FACILITIES. OUTSIDE TOILETS.

DIV. SOUTHERN
 3 1/2" Y. P.
 1" x 3 1/2" M. & B.
 BOARDS & BATTENS
 S.F.A.N. C-683



FLOOR PLAN:
 SCALE 1/16" = 1'-0"

COMBINATION STATION
 TOWNLEY, ALA.

JUNE 27, 1919.