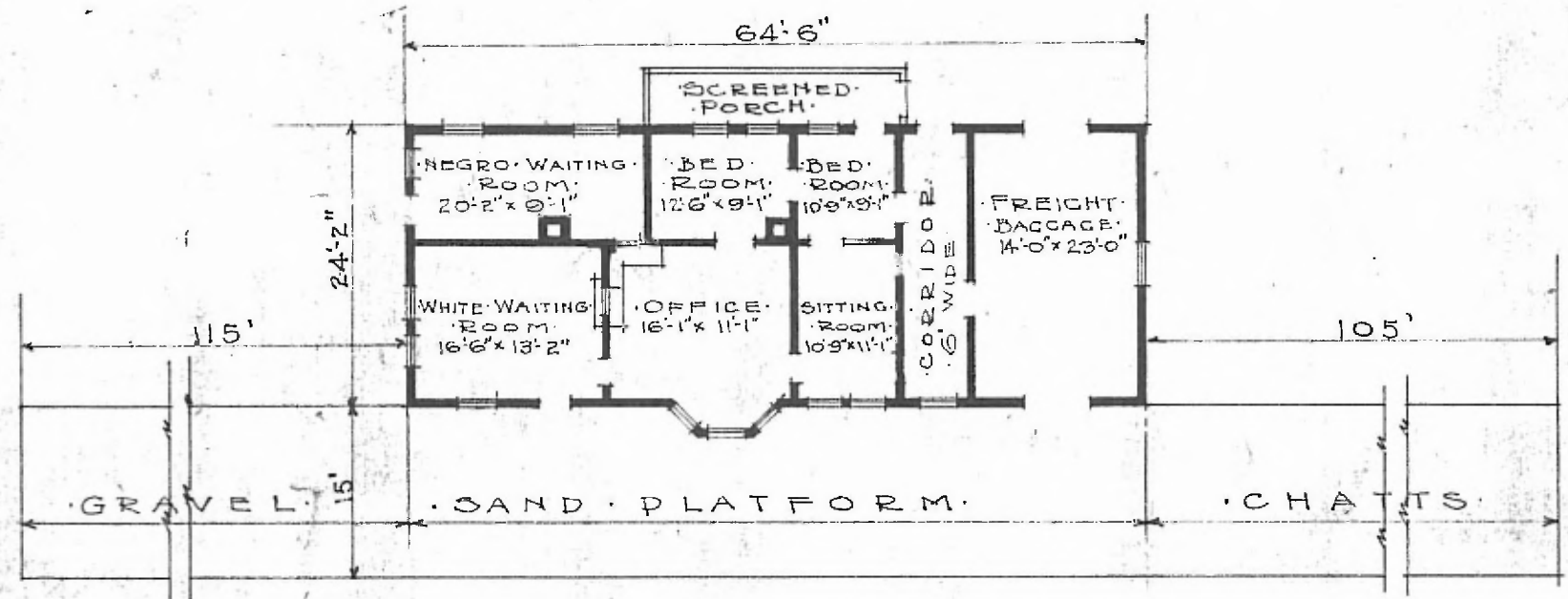


- ERECTED TYPE: FRAME
- FOUNDATION: CONCRETE
- WALLS: 2"x6"
- ROOF: (TYPE: HIP, SHINGLES)
- PITCH: 1/3
- HEATING: STOVES

- FLOOR: 1/8" x 3/4" Y.P. SUB. DIV. BIRMINGHAM
- FINISH: (INSIDE: 1/8" x 3/4" M.&D.)
- CEILING HEIGHT: 11'5"
- LIGHTING: OIL LAMPS.
- SANITAR FACILITIES: OUTSIDE TOILETS.



FLOOR PLAN  
SCALE 1/16" = 1'-0"

COMBINATION STATION  
QUINTON ALA.

JUNE 21, 1919.