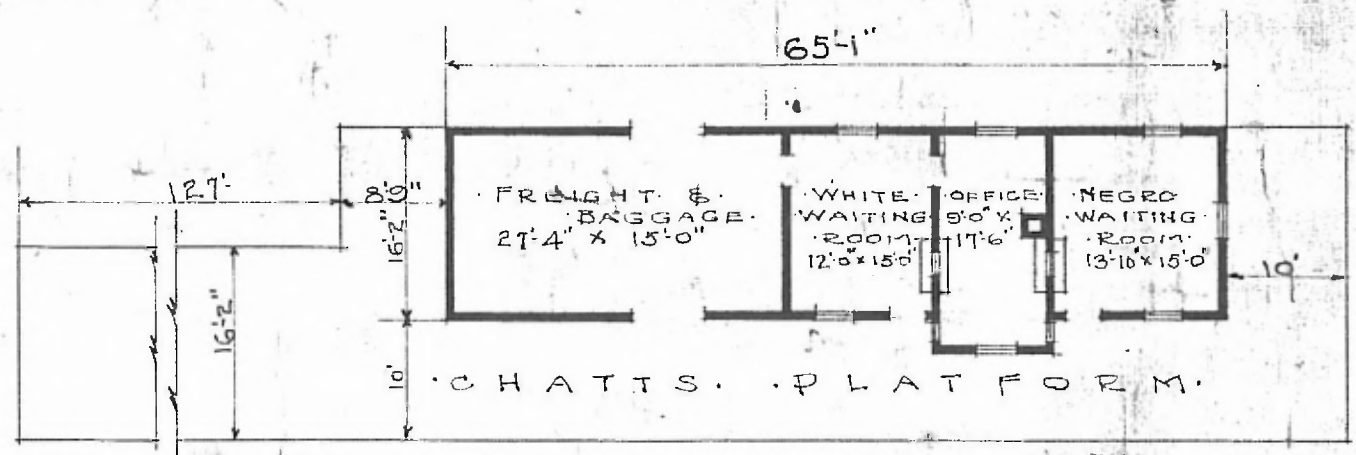


- ERECTED.
- TYPE: FRAME.
- FOUNDATION: WOOD BLOCKS
- WALLS: 2"x6"
- ROOF: (TYPE: GABLE, SHINGLES  
PITCH: 4/12)
- HEATING: STOVES.
- FLOOR
- FINISH { INSIDE: 3/4" x 5 1/4" M. & B.  
OUTSIDE: BOARDS & BATTENS.
- CEILING HEIGHT: 10'-4"
- LIGHTING: OIL LAMPS.
- SANITARY FACILITIES: OUTSIDE TOILETS.

DIV. SOUTHERN  
SUB-DIV. BIRMINGHAM  
STA. NO. C-678



FLOOR PLAN  
SCALE 1/16" = 1'-0"

• COMBINATION STATION  
• POCAHONTAS ALA.

JUNE. 28. 1919.