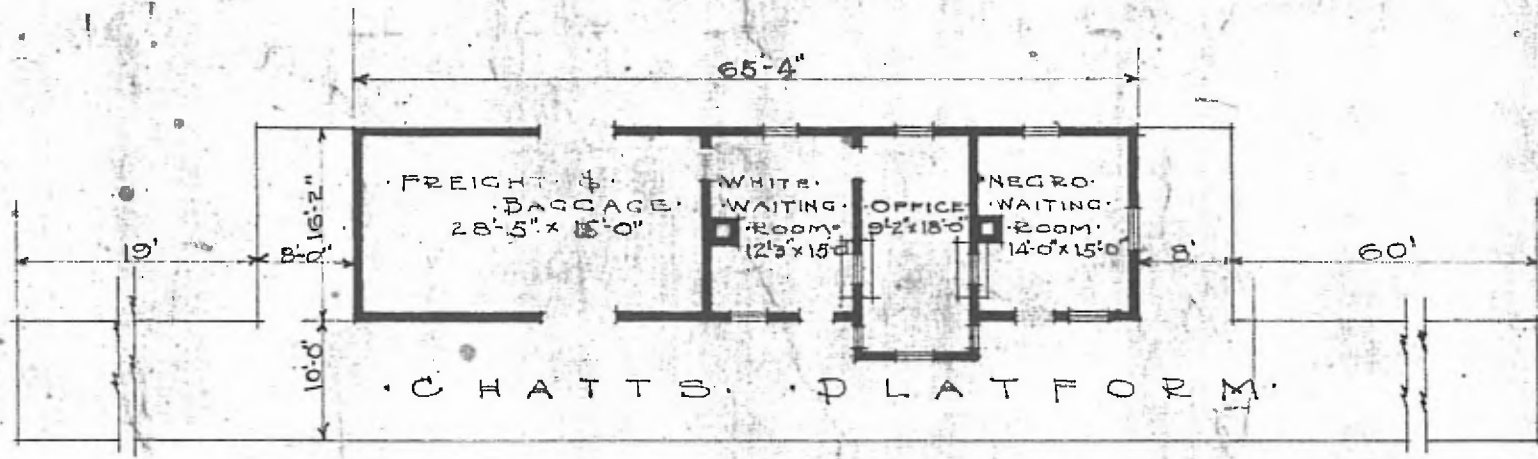


94

ERECTED
 TYPE: FRAME
 FOUNDATION: WOOD BLOCKS
 WALLS: 2"x6"
 ROOF: TYPE: GABLE, SHINGLES
 PITCH: 4
 HEATING: STOVES

FLOOR:
 FINISH: (INSIDE: 1/8"x3/4" Y.P., OUTSIDE: 3/4"x3/4" M.&P.)
 CEILING HEIGHT: 11'-10 1/2"
 LIGHTING: ELECTRIC
 SANITARY FACILITIES: OUTSIDE TOILET

DIV. SOUTHERN
 SUB. DIV. BIRMINGHAM
 BOARD & BATTENS 60 STA. NO. C-715



FLOOR PLAN
 SCALE 1/16" = 1'-0"



COMBINATION STATION
 DALOS ALA.

JUN 20 1919