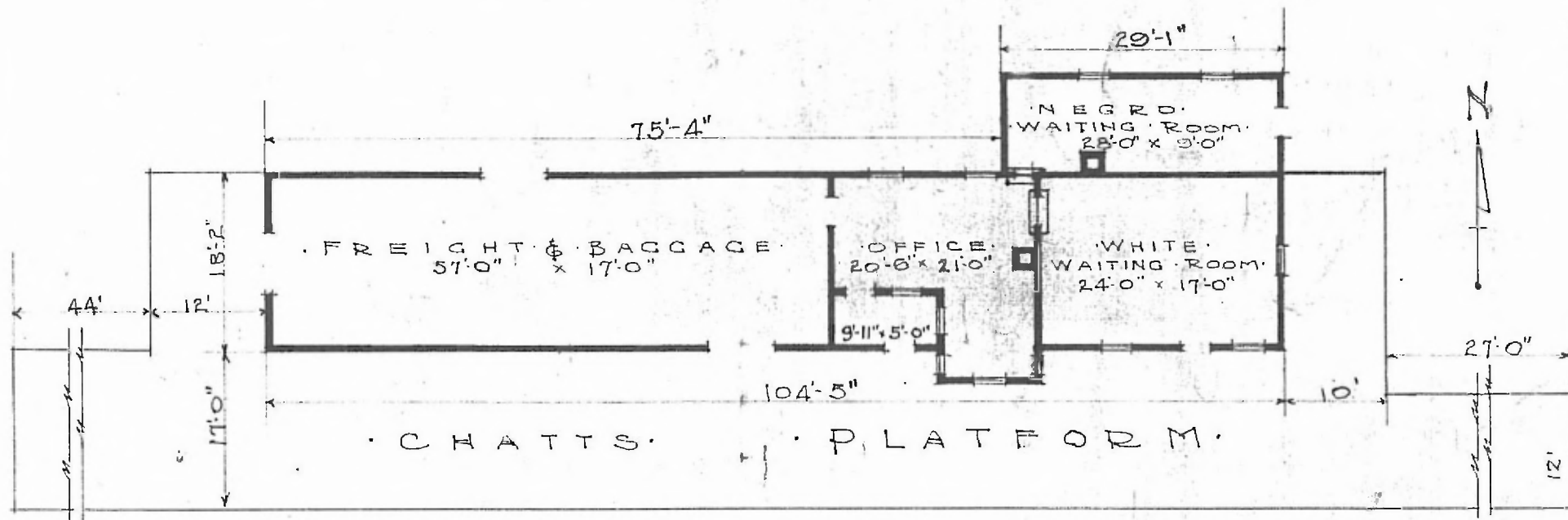


·ERECTED· 1903
 ·TYPE· FRAME
 ·FOUNDATION· WOOD BLOCKS
 ·WALLS· 2"x6"
 ·ROOF· { TYPE· HIP SHINGLES;
 { PITCH· ¼
 ·HEATING· STOVES.

FLOOR ¾" x ¾" Y.P.
 FINISH { INSIDE ¾" x ¾" M. & B.
 { OUTSIDE BOARDS & BATTENS.
 CEILING HEIGHT 10'-9"
 LIGHTING OIL LAMPS.
 SANITARY FACILITIES OUTSIDE TOILETS.

Sta. C649 (79)
 Div Southern
 Sub Birmingham



·FLOOR·PLAN·
 SCALE ¼" = 1'-0"

·COMBINATION·STATION
 ·GOIN·ALA.

JULY 2, 1919.