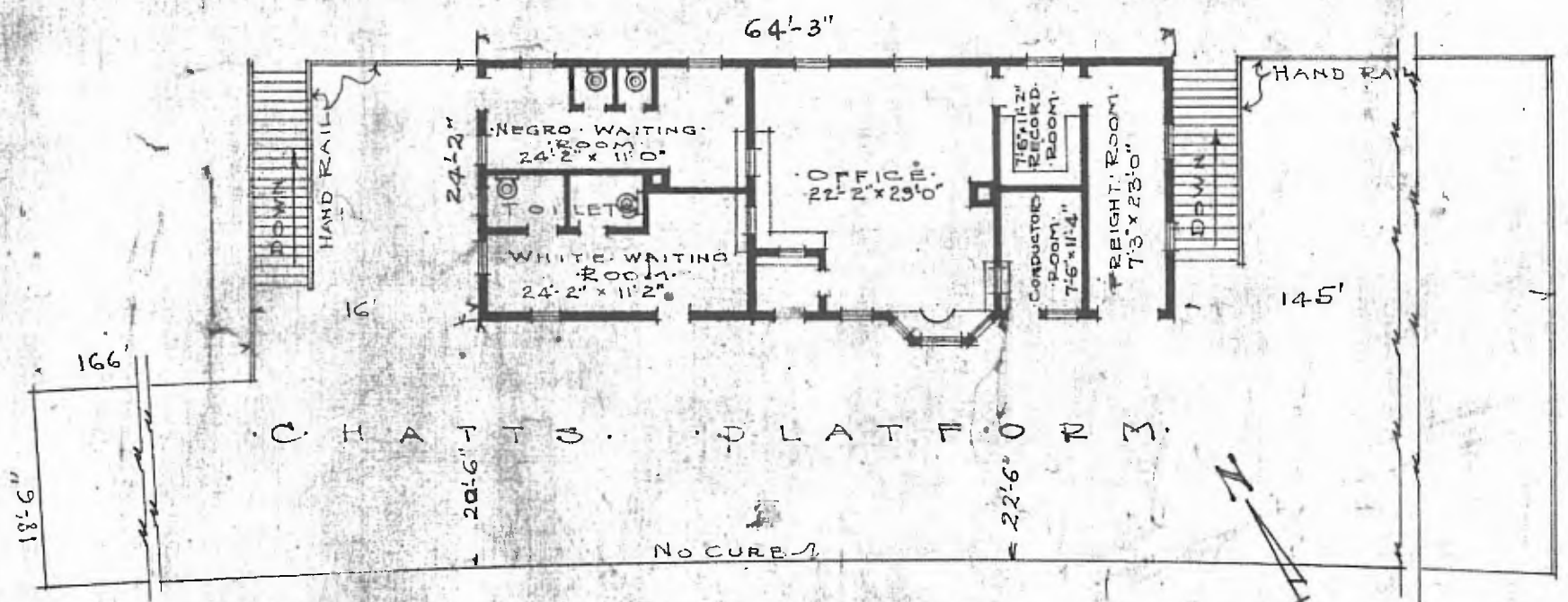


92

ERECTED: TYPE: FRAME
 FOUNDATION: CONCRETE
 WALLS: 2"x6"
 ROOF: TYPE: HIP, METAL SHINGLES
 PITCH: 1/3
 HEATING: STOVES

FLOOR: 3/8"x2 1/2"
 FINISH: INSIDE: 3"x34 M.&B.
 OUTSIDE: DROP SIDING
 CEILING HEIGHT: 11'-3"
 LIGHTING: ELECTRIC
 SANITARY FACILITIES: INSIDE TOILETS.

DIV. SOUTHERN
 S. B. DIV. BIRMINGHAM
 STATION C-707



FLOOR PLAN
 SCALE 1/16" = 1'-0"

COMBINATION STATION
 DORA ALA.

JUNE 21, 1919