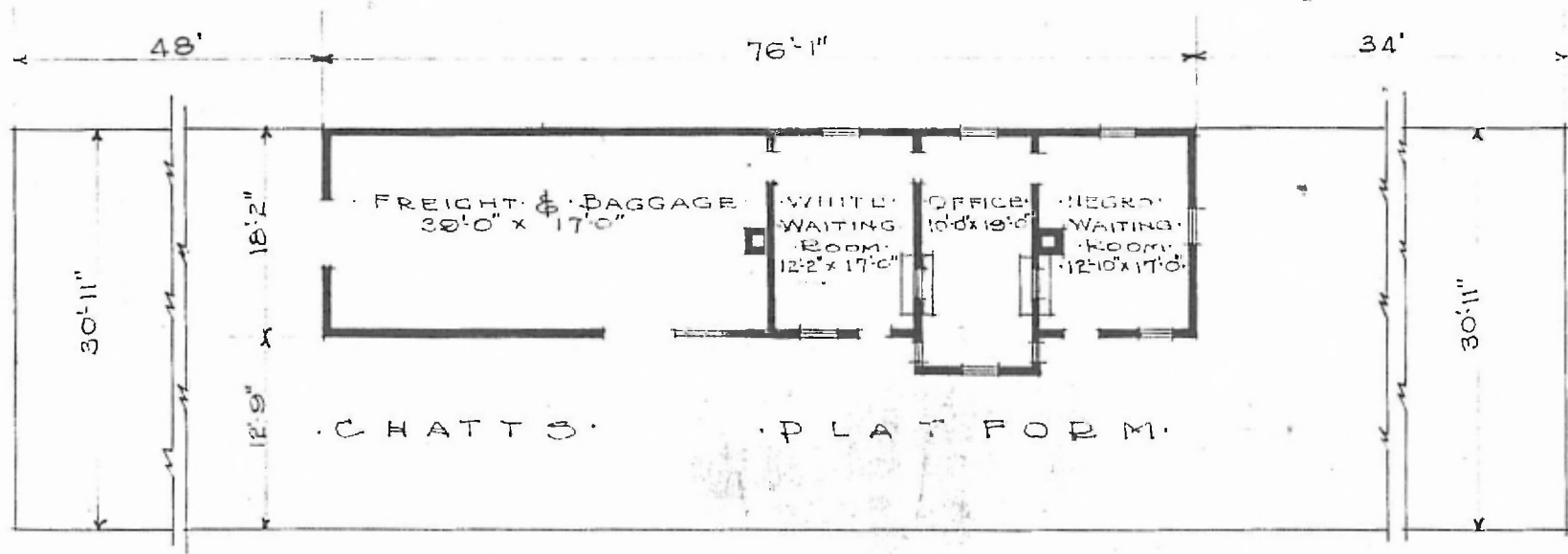


·ERECTED·
 ·TYPE· FRAME
 ·FOUNDATION· WOOD BLOCKS
 ·WALLS· 2"x6"
 ·ROOF· TYPE: GABLE, SHINGLES.
 PITCH: 1/4
 ·HEATING· STOVES

·FLOOR·
 ·FINISH· { INSIDE·
 OUTSIDE·
 ·CEILING HEIGHT·
 ·LIGHTING· OIL LAMPS
 ·SANITARY FACILITIES· OUTSIDE TOILET.

DIV. SOUTHERN
 E x 3/4" Y.P. SUB-DIV. BIRMINGHAM
 3/4" x 5/4" M&B. STA. NO. C-638
 BOARDS & BATTENS
 10'-11"

77



·FLOOR PLAN·
 SCALE 1/16" = 1'-0"

·COMBINATION STATION·
 ·CREWS ALA·

JULY 1, 1919.