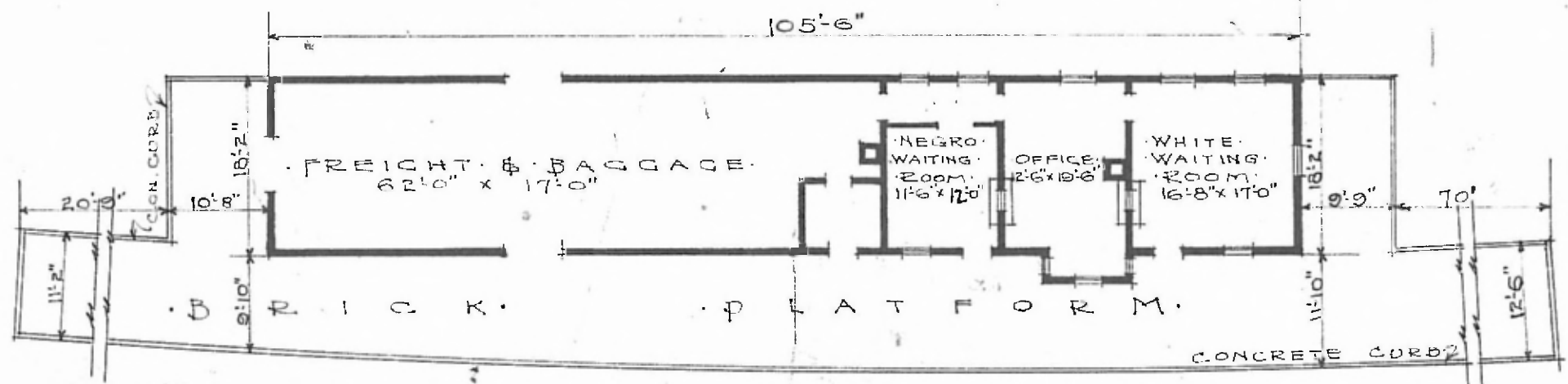


- ERECTED.
- TYPE.
- FOUNDATION.
- WALLS.
- ROOF (TYPE: GABLE, SHINGLES)
- HEATING (PITCH: 4 STOVES)

- FLOOR: 7/8" x 3/4" Y.P.
- FINISH (INSIDE: 3/4" x 3/4" M. & B.)
- CEILING HEIGHT: 10'-11"
- LIGHTING: OIL LAMPS.
- SANITARY FACILITIES: OUTSIDE TOILETS.



• FLOOR PLAN •
 • SCALE 1/16" = 1'-0" •



• COMBINATION STATION •
 • CORDOVA ALA •

JUNE 25, 1919.