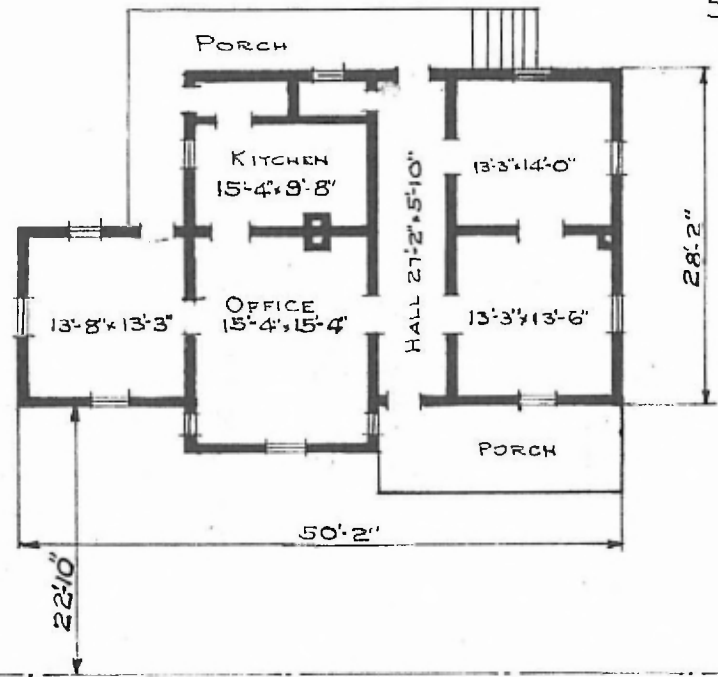


96

ERECTED TYPE
 FOUNDATION PILES
 WALLS 2'-6"
 ROOF { TYPE HIP-SHINGLES
 PITCH 1/3
 HEATING STOVES

FLOOR 1 3/4"
 FINISH { INSIDE 1/2" x 3/4" MATCHED
 OUTSIDE 1/2" x 3/4" DROP SIDING
 CEILING HEIGHT WAIT. RM. 9'-11"
 LIGHTING OIL LAMPS
 SANITARY FACILITIES OUTSIDE TOILET.

DIV. SOUTHERN
 SUBDIV. BIRMINGHAM
 STA. NO. C-717



FLOOR PLAN
 SCALE: 1/16" = 1'-0"

STATION AT
 COAL CREEK, ALA.

JUNE 20, 1919