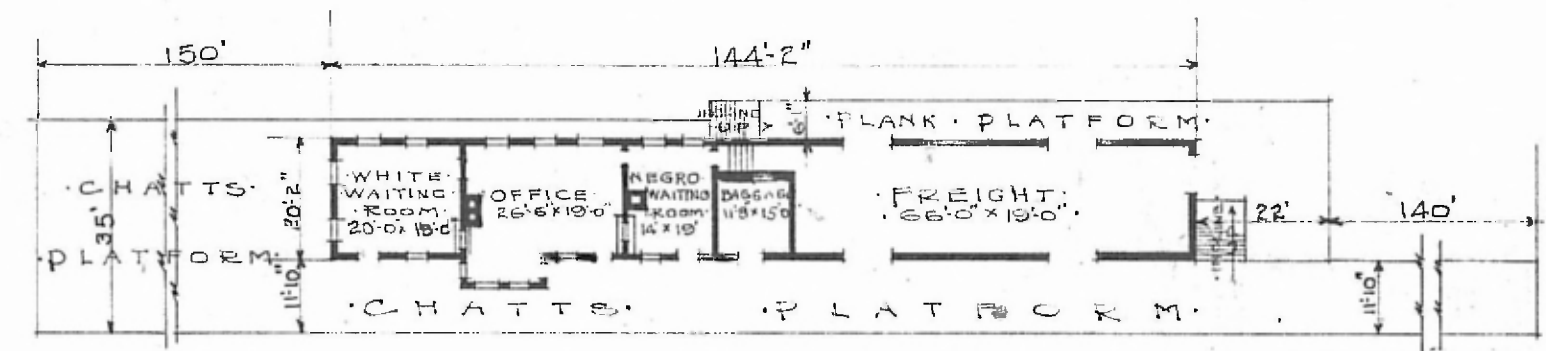


84

·ERECTED· 1903  
 ·TYPE· FRAME·  
 ·FOUNDATION· CONCRETE  
 ·WALLS· 2"x6"  
 ·ROOF· (TYPE· GABLE SHINGLES  
 ·PITCH· 1/4  
 ·HEATING· STOVES

·FLOOR· 3/8" x 3/4" Y. F.  
 ·FINISH· (INSIDE· 3/4" x 5 1/2" M. & B.  
 ·OUTSIDE· DROP SIDING·  
 ·CEILING HEIGHT· 11'5"  
 ·LIGHTING· ELECTRIC  
 ·SANITARY FACILITIES· OUTSIDE TOILETS.

DIV. SOUTHERN  
 SUB. DIV. BIRMINGHAM  
 STA. NO. C. 675



·FLOOR PLAN·  
 SCALE 1/32" = 1'-0"

·COMBINATION STATION·  
 ·CARBON HILL ALA·

JUNE 28, 1919.